

VERAWOOD RESIDENCES

TURNOVER FINISHES

Effective 10 September 2012

RESIDENTIAL AREA	2- BEDROOM UNITS		3-BEDROOM UNITS
	49.50 SQM	61.50 SQM	65.00 SQM
FLOOR FINISHES			
Living, Dining and Kitchen	Ceramic tiles with baseboard		
Bedrooms	Vinyl planks with baseboard		
Balcony	Ceramic tiles with pebble washout		
Toilet	Unglazed ceramic tiles		
WALL FINISHES			
Interior Walls	Painted finish		
Toilet	Painted plain cement finish above tile		
CEILING FINISHES			
Living, Dining and Kitchen	Painted plain cement finish		
Bedrooms	Painted plain cement finish		
Toilet	Painted ficem board ceiling		
KITCHEN AREA			
Granite finish kitchen countertop with cabinet system			
DOORS			
Entrance Door	Wooden panel door on metal jamb		
Bedroom Door	Wooden door on metal jamb		
Toilet Door	Wooden door with louver on metal jamb		
Balcony Door	Aluminum framed glass panel with insect screen		
WINDOWS			
Aluminum framed glass panel with insect screen (except awning windows)			
FINISHING HARDWARE			
Main Door Lockset	Lever type keyed lockset		
Bedroom Lockset	Lever type keyed lockset		
Toilet Lockset	Lever type privacy lockset		
TOILET AND KITCHEN FIXTURES			
		2- BEDROOM UNITS	3-BEDROOM UNITS
		49.50 SQM	65.00 SQM
Water Closet	Top flush, one-piece type		
Lavatory	Under counter type		Under counter type and wall-hung with semi-pedestal type
Kitchen Sink	Single Bowl with Drain Board		
Kitchen Faucet	Lever Type		
Shower Head and Fittings	Exposed Bath and Shower Mixer		
Soap Holder	White, Recessed type		

----- Nothing follows -----

Specifications are subject to change without prior notice

VERAWOOD RESIDENCES

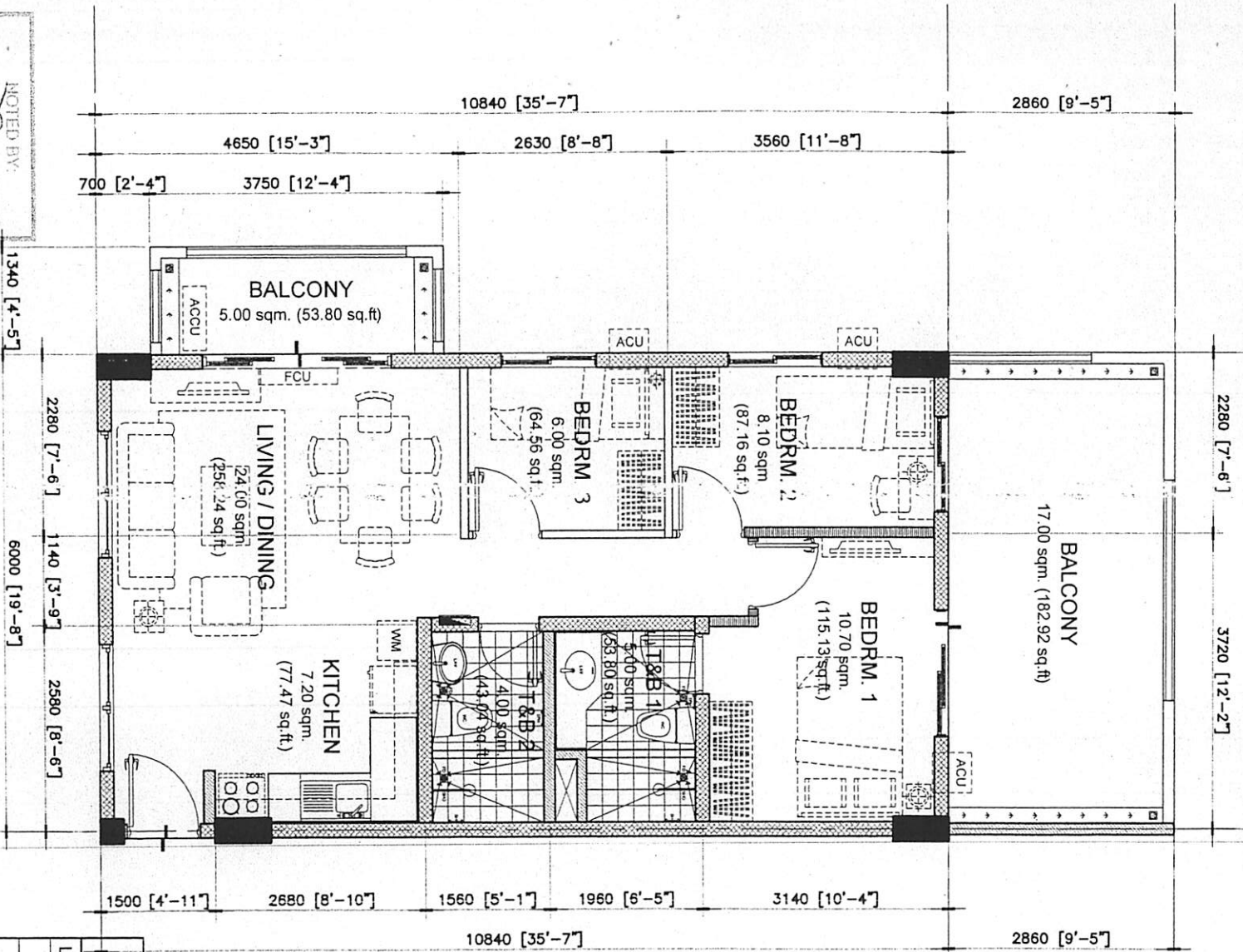
TURNOVER FINISHES

Effective 10 September 2012

SERVICE AREA	DESCRIPTION
<u>FLOOR FINISH</u>	Straight to finish concrete
<u>WALL FINISH</u>	Combination of cyclone wire and ficemboard
<u>ROOF FINISH</u>	Fiberglass and pre-painted metal sheets
<u>MISCELLANEOUS</u>	Provision for tapping point of water
	Provisior for electrical outlet

----- Nothing follows -----

Specifications are subject to change without prior notice



NOTED BY:

STEP 1	23 AUG 12
RMS	28 AUG
GSA	21 Aug

bevs.malongo
2012.08.01

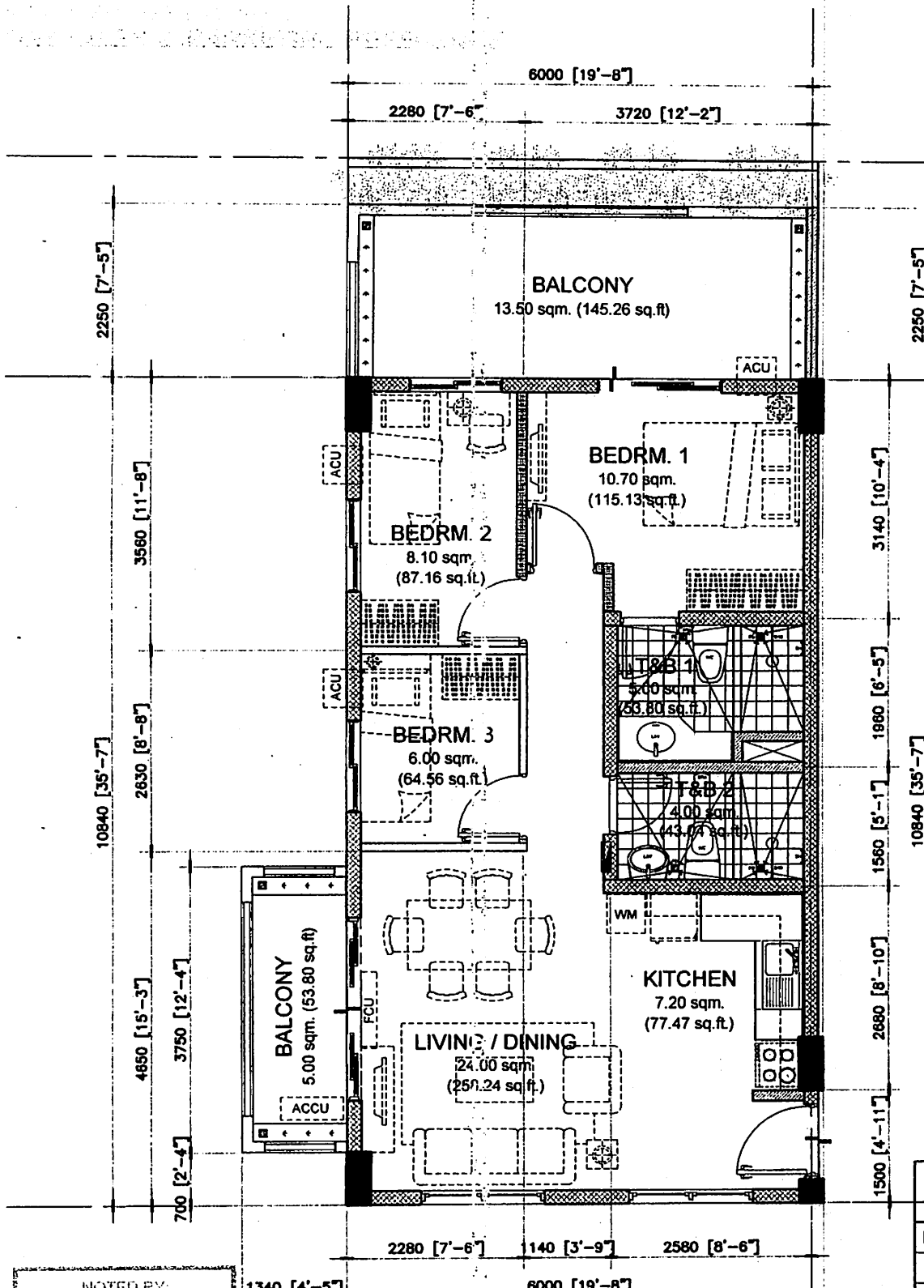
65.00 sq.m. 3-BR TYPE - A
END UNIT - 65.00 sq.m. / 699.40 sq.ft.
WITH 2 BALCONIES - (AREAS MAY VARY)

NOTE:
 - DIMENSIONS & AREAS MAY VARY BASED ON ACTUAL SITE CONDITION.
 - FURNITURES & APPLIANCES ARE NOT INCLUDED.



END UNIT	AREA	
	SQ. MTR.	SQ. FT.
LIVING/DINING	24.00	258.24
KITCHEN	7.20	77.47
BEDROOM 1	10.70	115.13
BEDROOM 2	8.10	87.16
BEDROOM 3	6.00	64.56
T&B 1	5.00	53.80
T&B 2	4.00	43.04
UNIT AREA	65.00	699.40
BALCONY 1	17.00	182.92
BALCONY 2	5.00	53.80
GR. FLR. AREA	87.00	936.12

SCALE: 1 : 80 mts.



NOTED BY:
STEPH [Signature] 23MVG
RMS [Signature] 28A12
GSA [Signature] 29A12
bevs.malong
2012.08.01

65.00 sq.m. 3-BR TYPE - A
END UNIT - 65.00 sq.m. / 699.40 sq.ft.
WITH 2 BALCONIES - (AREAS MAY VARY)

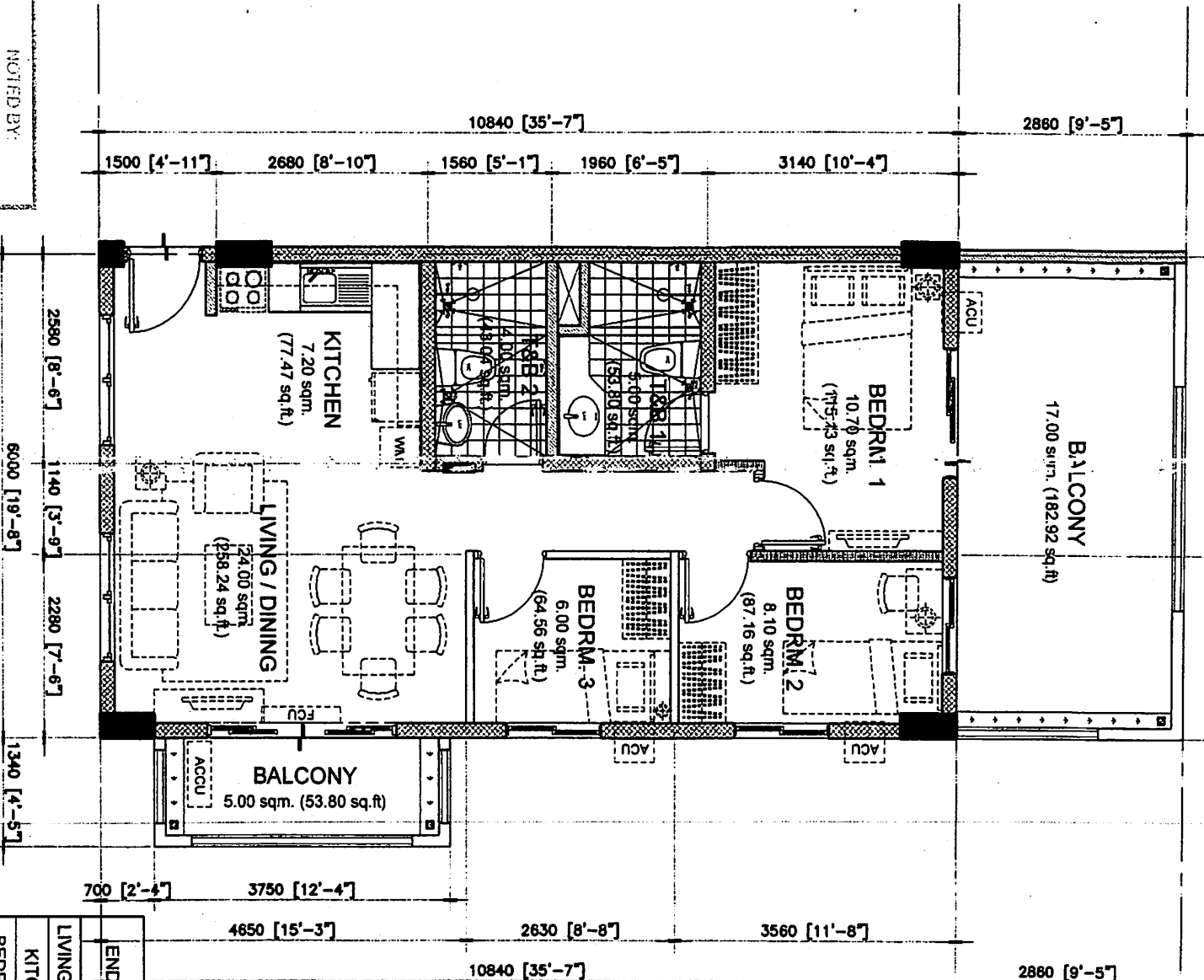
SCALE: 1 : 80 mtrs.

NOTE:
- DIMENSIONS & AREAS MAY VARY BASED ON ACTUAL SITE CONDITION.
- FURNITURES & APPLIANCES ARE NOT INCLUDED.

END UNIT	AREA	
	SQ. MTR.	SQ. FT.
LIVING/DINING	24.00	258.24
KITCHEN	7.20	77.47
BEDROOM 1	10.70	115.13
BEDROOM 2	8.10	87.16
BEDROOM 3	6.00	64.56
T&B 1	5.00	53.80
T&B 2	4.00	43.04
UNIT AREA	65.00	699.40
BALCONY 1	13.50	145.26
BALCONY 2	5.00	53.80
GR. FLR. AREA	83.50	898.46



NeauDoo
Residence



NOTED BY:	
STEPH	Z3/MC/12
RMS	20/06
GSA	21/06

bons matong
2012.08.01

65.00 sq.m. 3-BR TYPE - A.1
END UNIT - 65.00 sq.m. / 699.40 sq.ft.
 WITH 2 BALCONIES - (AREAS MAY VARY)

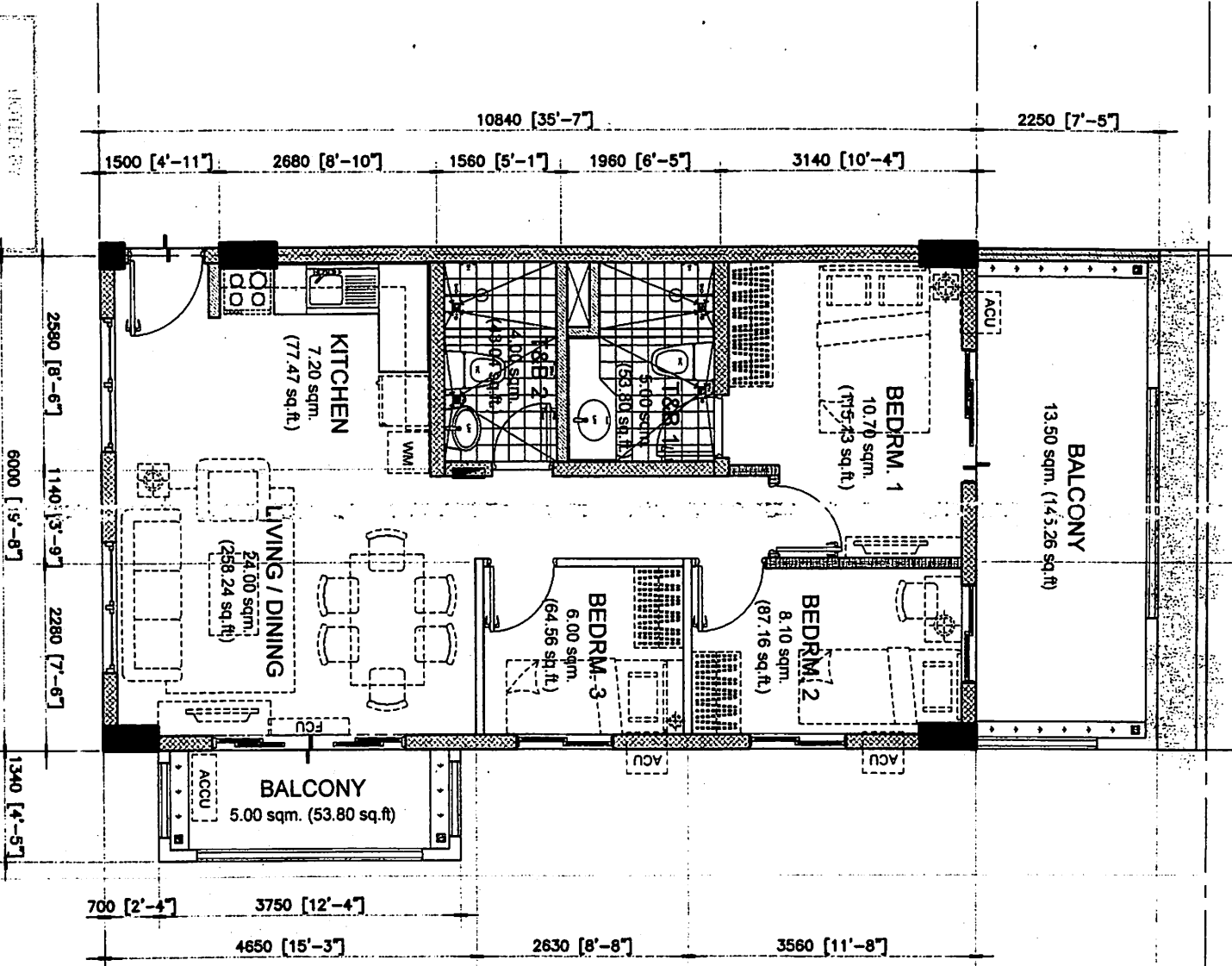
SCALE: 1 : 80 mtrs.

NOTE:
 - DIMENSIONS & AREAS MAY VARY BASED ON ACTUAL SITE CONDITION.
 - FURNITURES & APPLIANCES ARE NOT INCLUDED.



END UNIT	AREA	
	SQ. MTR.	SQ. FT.
LIVING/DINING	24.00	258.24
KITCHEN	7.20	77.47
BEDROOM 1	10.70	115.13
BEDROOM 2	8.10	87.16
BEDROOM 3	6.00	64.56
T&B 1	5.00	53.80
T&B 2	4.00	43.04
UNIT AREA	65.00	699.40
BALCONY 1	17.00	182.92
BALCONY 2	5.00	53.80
GR. FLR. AREA	87.00	936.12

NeauDoo
Residences



END UNIT	AREA	
	SQ. MTR.	SQ. FT.
LIVING/DINING	24.00	258.24
KITCHEN	7.20	77.47
BEDROOM 1	10.70	115.13
BEDROOM 2	8.10	87.16
BEDROOM 3	6.00	64.56
T&B 1	5.00	53.80
T&B 2	4.00	43.04
UNIT AREA	65.00	699.40
BALCONY 1	13.50	145.26
BALCONY 2	5.00	53.80
GR. FLR. AREA	83.50	898.46

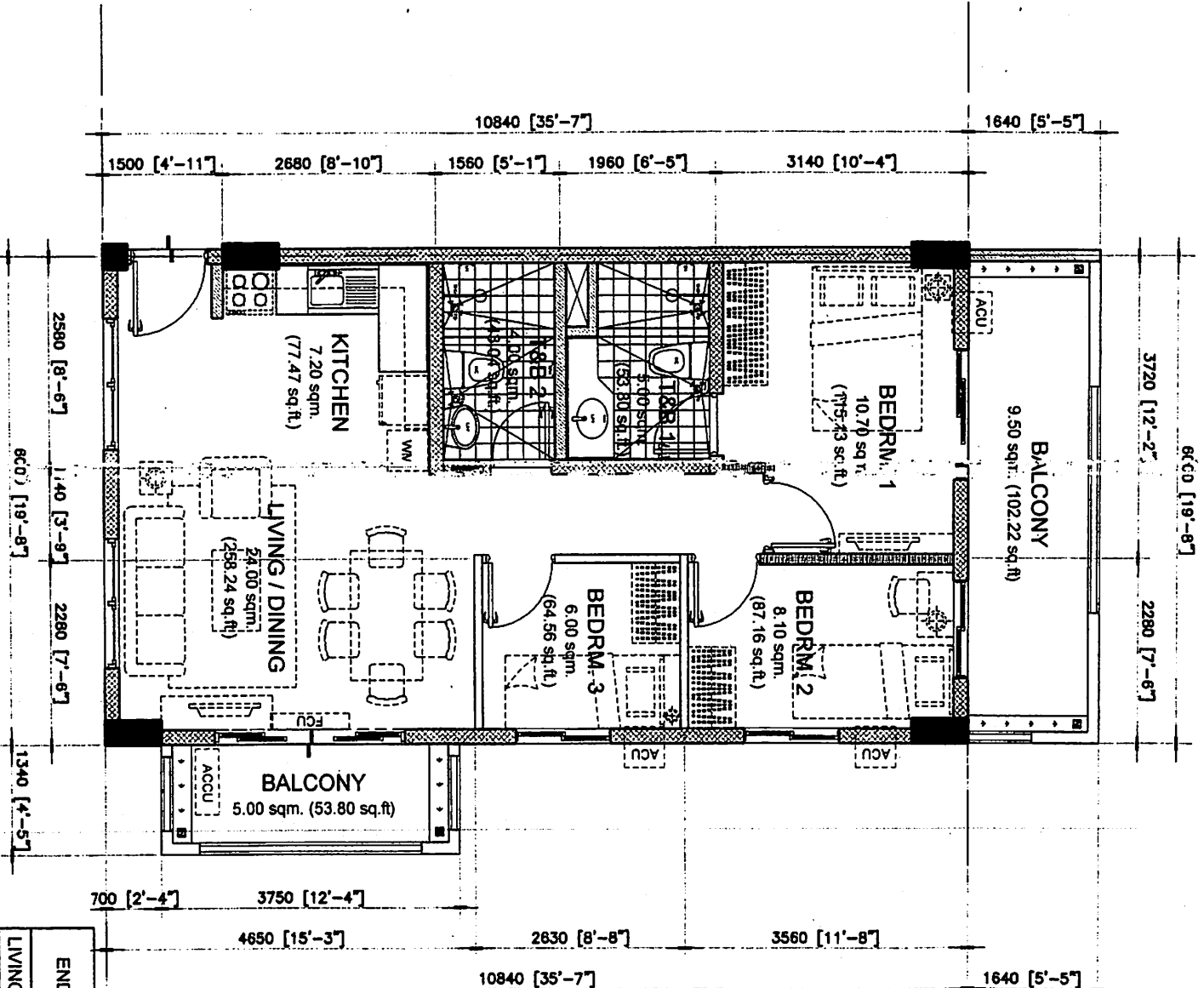
65.00 sq.m. 3-BR TYPE - A.1
END UNIT - 65.00 sq.m. / 699.40 sq.ft.
 WITH 2 BALCONIES - (AREAS MAY VARY)

SCALE: 1 : 80 mtrs.

NOTE:
 - DIMENSIONS & AREA MAY VARY BASED ON ACTUAL SITE CONDITION.
 - FURNITURES & APPLIANCES ARE NOT INCLUDED.

DATE: 23/06/22	DESIGNER: [Signature]
PROJECT: RMS	CLIENT: [Signature]
NO: 2072.08.01	SCALE: 1:80





NOVED 83		
STEPH	23/06/12	
RMS	23/06/12	
GSA	23/06/12	

Devs meeting
2012.08.01



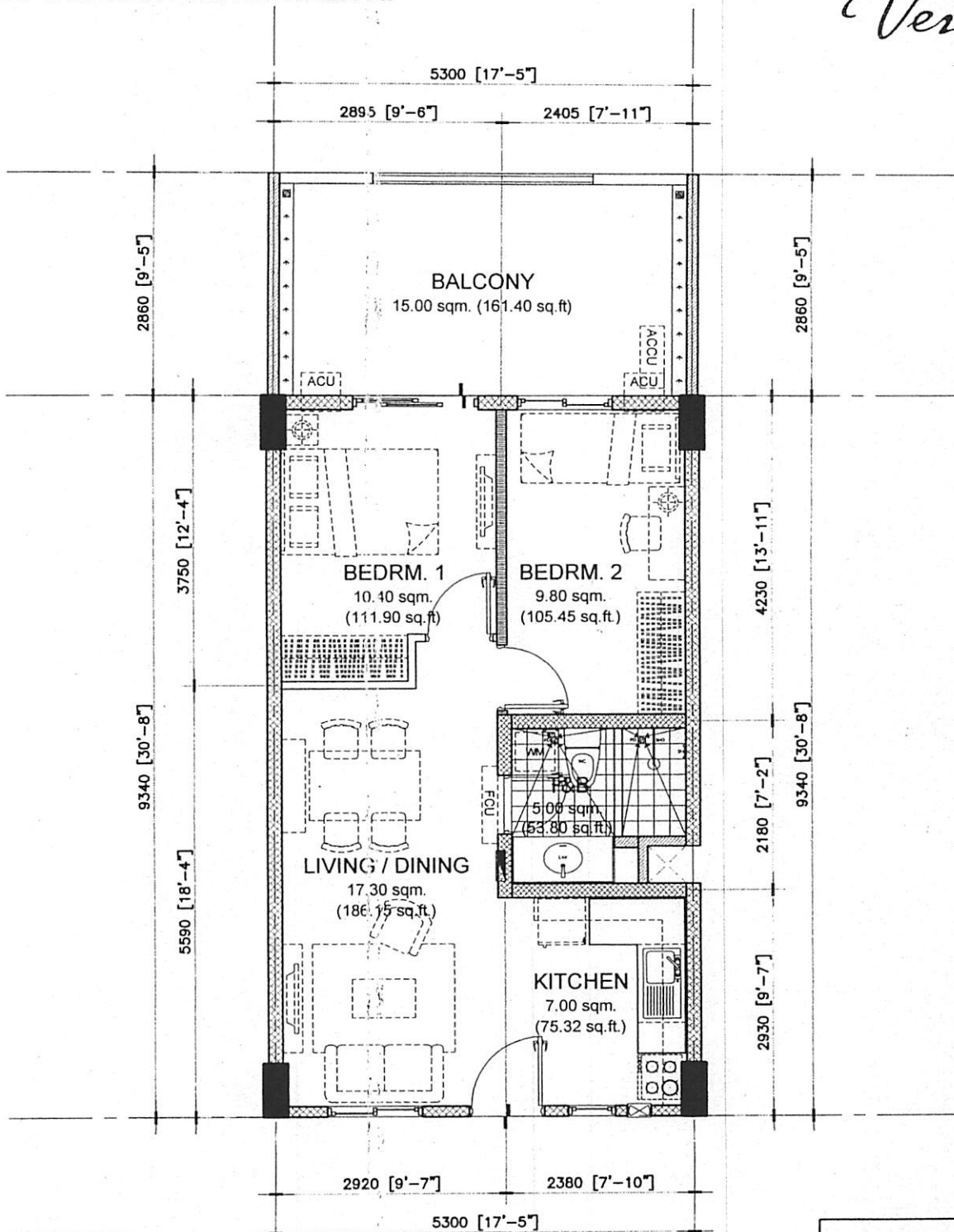
65.00 sq.m. 3-BR TYPE - A.1
END UNIT - 65.00 sq.m. / 699.40 sq.ft.
WITH 2 BALCONIES - (AREAS MAY VARY)

NOTE:
 - DIMENSIONS & AREAS MAY VARY BASED ON ACTUAL SITE CONDITION.
 - FURNITURES & APPLIANCES ARE NOT INCLUDED.

SCALE: 1 : 80 mtrs.

END UNIT	AREA	
	SQ. MTR.	SQ. FT.
LIVING/DINING	24.00	258.24
KITCHEN	7.20	77.47
BEDROOM 1	10.70	115.13
BEDROOM 2	8.10	87.16
BEDROOM 3	6.00	64.56
T&B 1	5.00	53.80
T&B 2	4.00	43.04
UNIT AREA	65.00	699.40
BALCONY 1	9.50	102.22
BALCONY 2	5.00	53.80
GR. FLR. AREA	79.50	855.42

STANDARD UNIT LAYOUTS:
FOR SALES & MARKETING REFERENCE



NOTED BY:

STEPH	[Signature]	28/06/12
RMS	[Signature]	28/06/12
GSA	[Signature]	[Signature]

bevs.malong
2012.08.01

49.50 sq.m. 2-BR TYPE - A
MID UNIT - 49.50 sq.m. / 532.62 sq.ft.
WITH BALCONY - (AREAS MAY VARY)

SCALE: 1 : 80 mtrs.

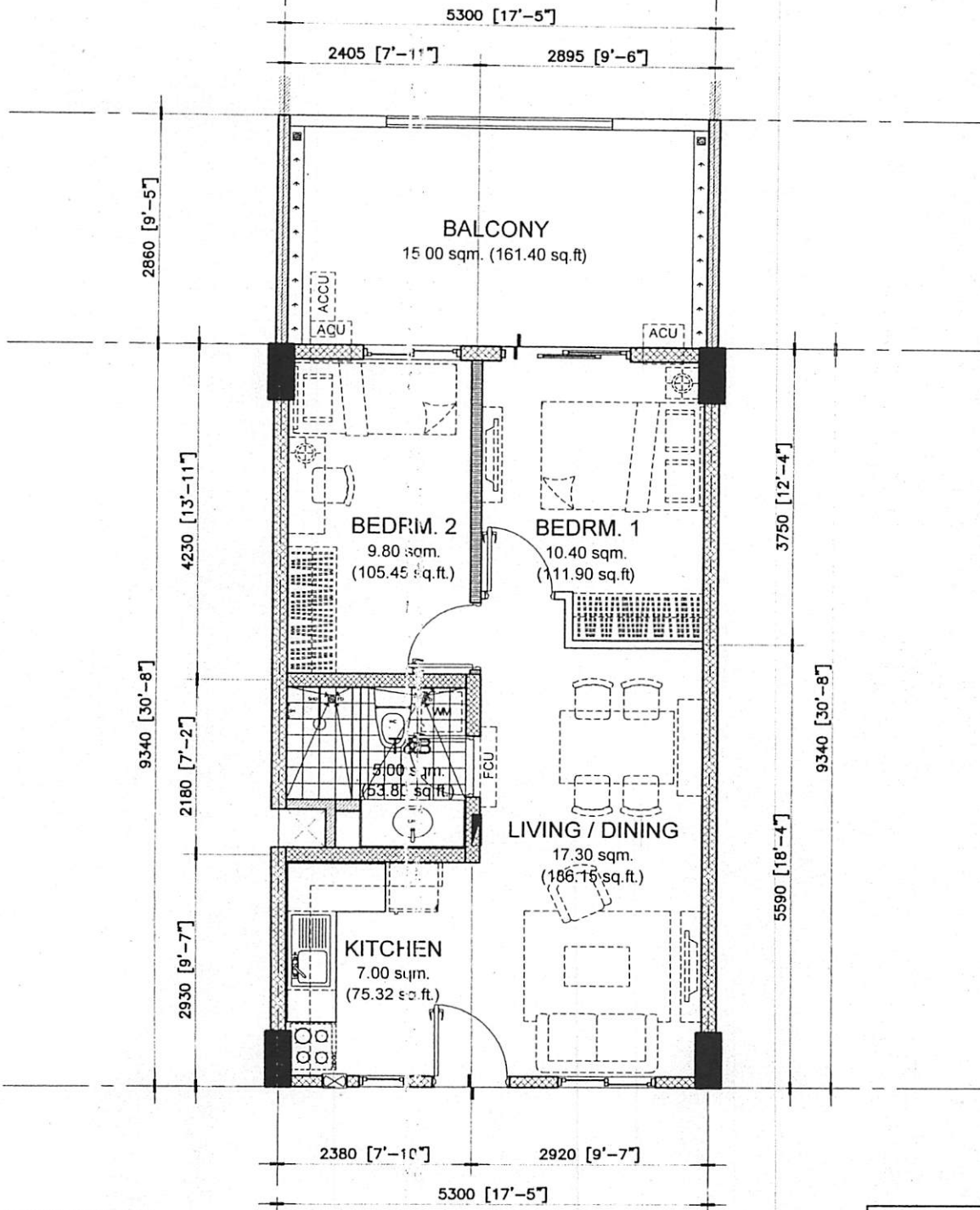
NOTE:
- DIMENSIONS & AREAS MAY VARY BASED ON ACTUAL SITE CONDITION.
- FURNITURES & APPLIANCES ARE NOT INCLUDED.

MID UNIT	AREA	
	SQ. MTR.	SQ. FT.
LIVING/DINING	17.30	186.15
KITCHEN	7.00	75.32
BEDROOM 1	10.40	111.90
BEDROOM 2	9.80	105.45
T&B	5.00	53.80
UNIT AREA	49.50	532.62
BALCONY	15.00	161.40
GR. FLR. AREA	64.50	694.02



STANDARD UNIT LAYOUTS:
FOR SALES & MARKETING REFERENCE

Verawood
Residences



NOTED BY:

STEPH	<i>[Signature]</i>	23 AUG 12
RMS	<i>[Signature]</i>	18 AUG
GSA	<i>[Signature]</i>	21 Aug

bevs.malong
2012.08.01

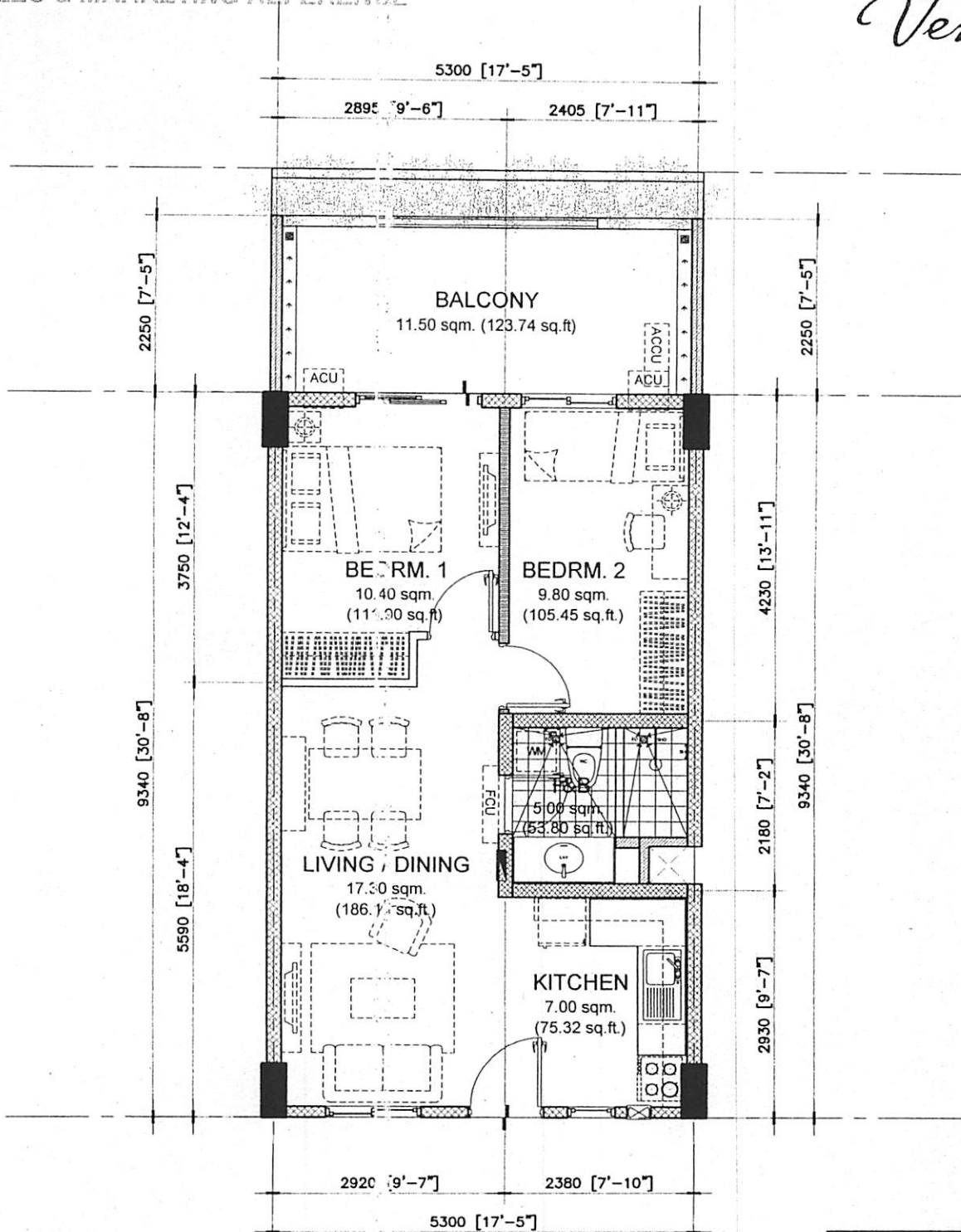
49.50 sq.m. 2-BR TYPE - A.1
MID UNIT - 49.50 sq.m. / 532.62 sq.ft.
WITH BALCONY - (AREAS MAY VARY)

SCALE: 1 : 80 mtrs.

NOTE:
- DIMENSIONS & AREAS MAY VARY BASED ON ACTUAL SITE CONDITION.
- FURNITURES & APPLIANCES ARE NOT INCLUDED.

MID UNIT	AREA	
	SQ. MTR.	SQ. FT.
LIVING/DINING	17.30	186.15
KITCHEN	7.00	75.32
BEDROOM 1	10.40	111.90
BEDROOM 2	9.80	105.45
T&B	5.00	53.80
UNIT AREA	49.50	532.62
BALCONY	15.00	161.40
GR. FLR. AREA	64.50	694.02





49.50 sq.m. 2-BR TYPE - A
MID UNIT - 49.50 sq.m. / 532.62 sq.ft.
WITH BALCONY - (AREAS MAY VARY)

SCALE: 1 : 80 mtrs.

NOTE:
- DIMENSIONS & AREA'S MAY VARY BASED ON ACTUAL SITE CONDITION.
- FURNITURES & APPLIANCES ARE NOT INCLUDED.

MID UNIT	AREA	
	SQ. MTR.	SQ. FT.
LIVING/DINING	17.30	186.15
KITCHEN	7.00	75.32
BEDROOM 1	10.40	111.90
BEDROOM 2	9.80	105.45
T&B	5.00	53.80
UNIT AREA	49.50	532.62
BALCONY	11.50	123.74
GR. FLR. AREA	61.00	656.36

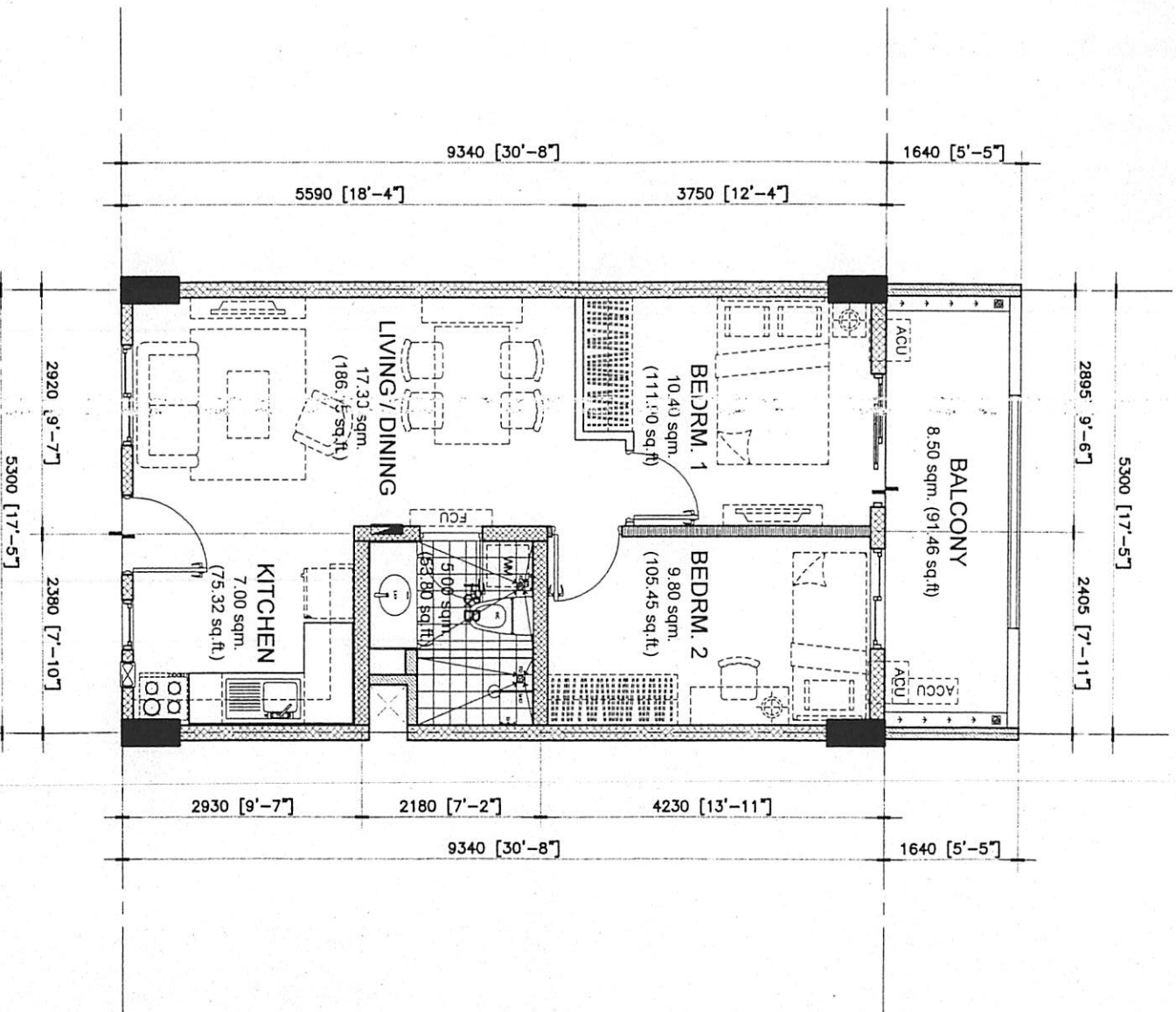
NOTED BY:		
SREP H	[Signature]	23/06/12
RMS	[Signature]	28/06/12
GSA	[Signature]	21/07/12

bevs.malong
2012.08.01



STANDARD UNIT LAYOUTS:
FOR SALES & MARKETING REFERENCE

Verano
Residences



NOTED BY:		
STEPH	23 JAN 12	
RMS	28 MAR	
GSA	21 APR	



49.50 sq.m. 2-BR TYPE - A
MID UNIT - 49.50 sq.m. / 532.62 sq.ft.
WITH BALCONY - (AREAS MAY VARY)

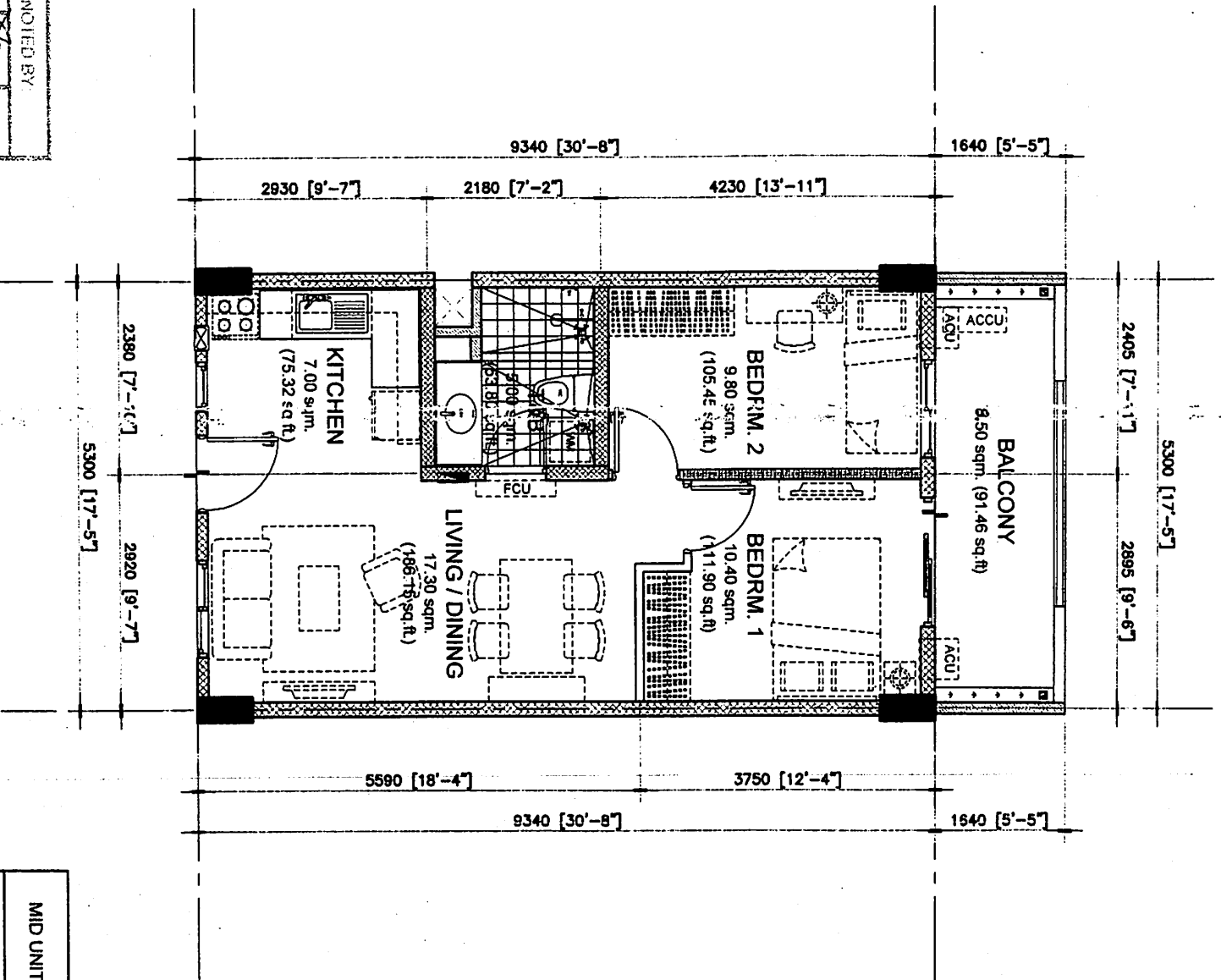
SCALE: 1 : 80 mtrs.

NOTE:
- DIMENSIONS & AREAS MAY VARY BASED ON ACTUAL SITE CONDITION.
- FURNITURES & APPLIANCES ARE NOT INCLUDED.

MID UNIT	AREA	
	SQ. MTR.	SQ. FT.
LIVING/DINING	17.30	186.15
KITCHEN	7.00	75.32
BEDROOM 1	10.40	111.90
BEDROOM 2	9.80	105.45
T&B	5.00	53.80
UNIT AREA	49.50	532.62
BALCONY	8.50	91.46
GR. FLR. AREA	58.00	624.08

STANDARD UNIT LAYOUTS:
FOR SALES & MARKETING REFERENCE

Verano
Residences



49.50 sq.m. 2-BR TYPE - A.1
MID UNIT - 49.50 sq.m. / 532.62 sq.ft.
WITH BALCONY - (AREAS MAY VARY)

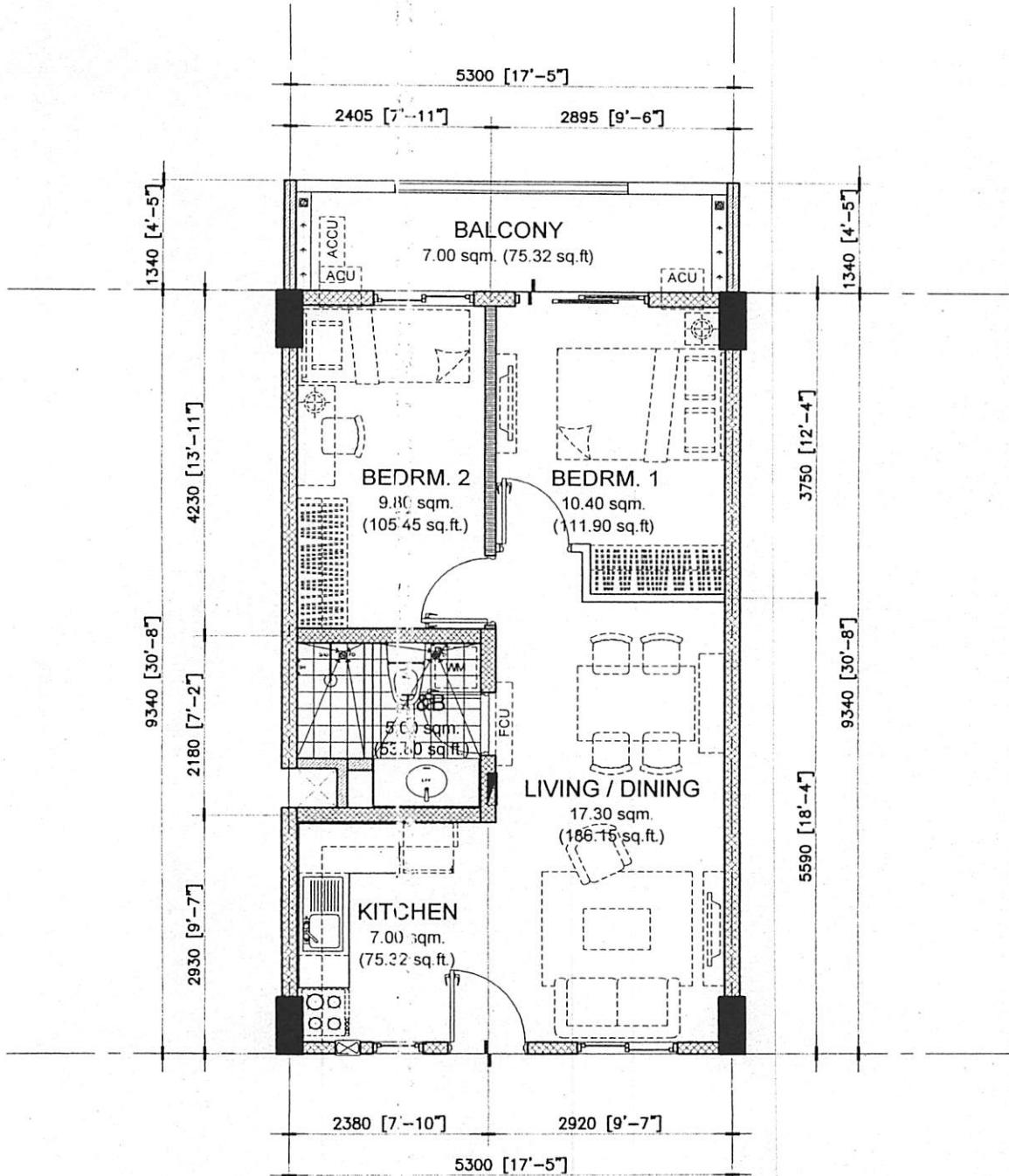
SCALE:

1 : 80 mths.

NOTE:
- DIMENSIONS & AREAS MAY VARY BASED ON ACTUAL SITE CONDITION.
- FURNITURES & APPLIANCES ARE NOT INCLUDED.

MID UNIT	AREA	
	SQ. MTR.	SQ. FT.
LIVING/DINING	17.30	186.15
KITCHEN	7.00	75.32
BEDROOM 1	10.40	111.90
BEDROOM 2	9.80	105.45
T&B	5.00	53.80
UNIT AREA	49.50	532.62
BALCONY	8.50	91.46
GR. FLR. AREA	58.00	624.08





NOTED BY:	
STEPH	23/06/12
RMS	28/06/12
GSA	21/07/12

bevs.malong
2012.08.01

49.50 sq.m. 2-BR TYPE - A.1
MID UNIT - 49.50 sq.m. / 532.62 sq.ft.
WITH BALCONY - (AREAS MAY VARY)

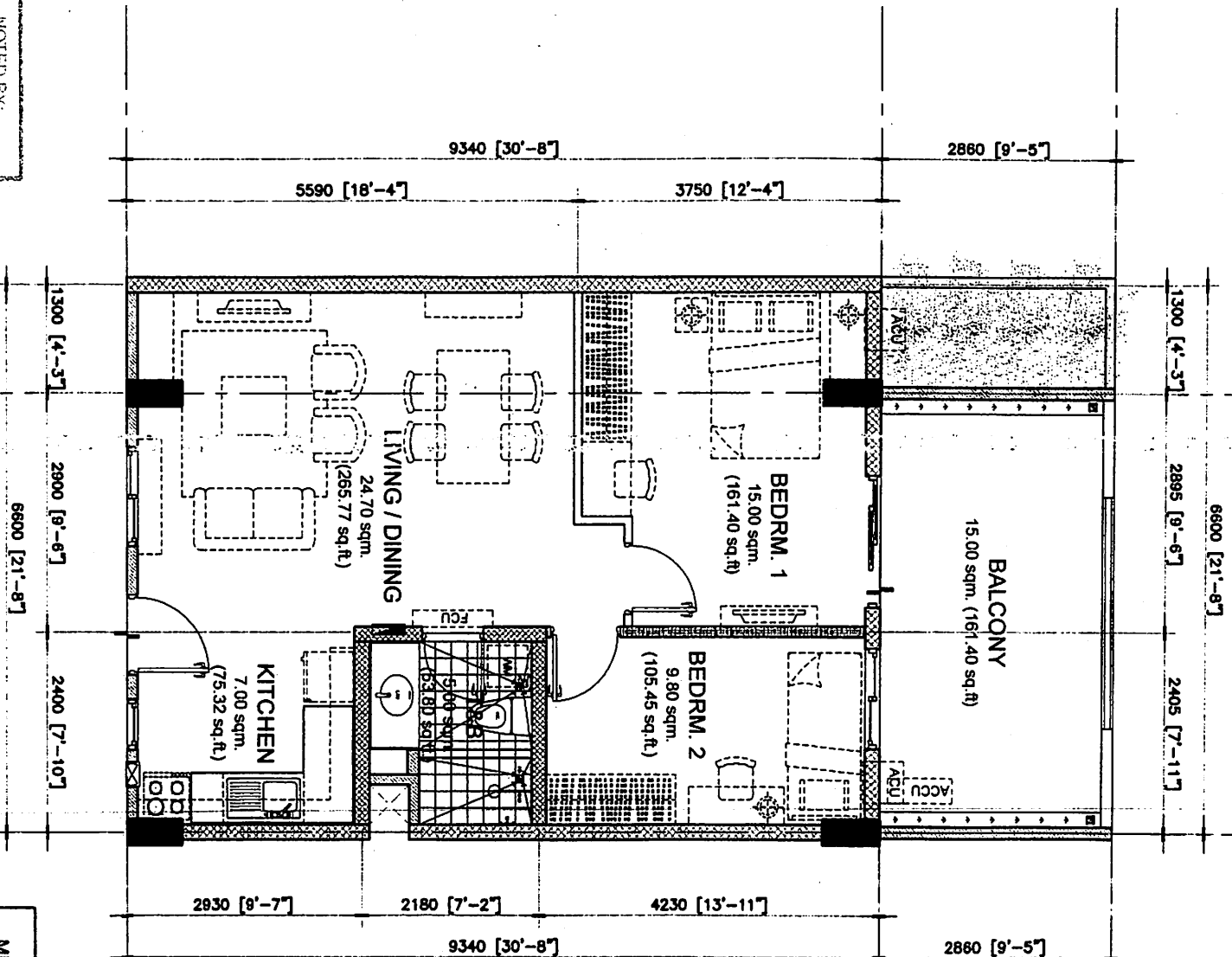
SCALE: 1 : 80 mtrs.

NOTE:
- DIMENSIONS & AREAS MAY VARY BASED ON ACTUAL SITE CONDITION.
- FURNITURES & APPLIANCES ARE NOT INCLUDED.

MID UNIT	AREA	
	SQ. MTR.	SQ. FT.
LIVING/DINING	17.30	186.15
KITCHEN	7.00	75.32
BEDROOM 1	10.40	111.90
BEDROOM 2	9.80	105.45
T&B	5.00	53.80
UNIT AREA	49.50	532.62
BALCONY	7.00	75.32
GR. FLR. AREA	56.50	607.94

STANDARD UNIT LAYOUTS:
FOR SALES & MARKETING REFERENCE

Veranda
Residents



NOTED BY:		
STEPH	<i>[Signature]</i>	28 AUG 12
RMS	<i>[Signature]</i>	28 AUG 12
GSA	<i>[Signature]</i>	21 AUG 12

Devs: mablong
2012.08.01



SCALE:

1 : 80 mtrs.

NOTE:
- DIMENSIONS & AREA'S MAY VARY BASED ON ACTUAL SITE CONDITION.
- FURNITURES & APPLIANCES ARE NOT INCLUDED.

61.50 sq.m. 2-BR TYPE - B
MID UNIT - 61.50 sq.m. / 661.74 sq.ft.
WITH BALCONY - (AREAS MAY VARY)

MID UNIT	AREA	
	SQ. MTR.	SQ. FT.
LIVING/DINING	24.70	265.77
KITCHEN	7.00	75.32
BEDROOM 1	15.00	161.40
BEDROOM 2	9.80	105.45
T&B	5.00	53.80
UNIT AREA	61.50	661.74
BALCONY	15.00	161.40
GR. FLR. AREA	76.50	823.14

Feels real good to be home

DMCI HOMES

2012.08.01
Devs. M8090

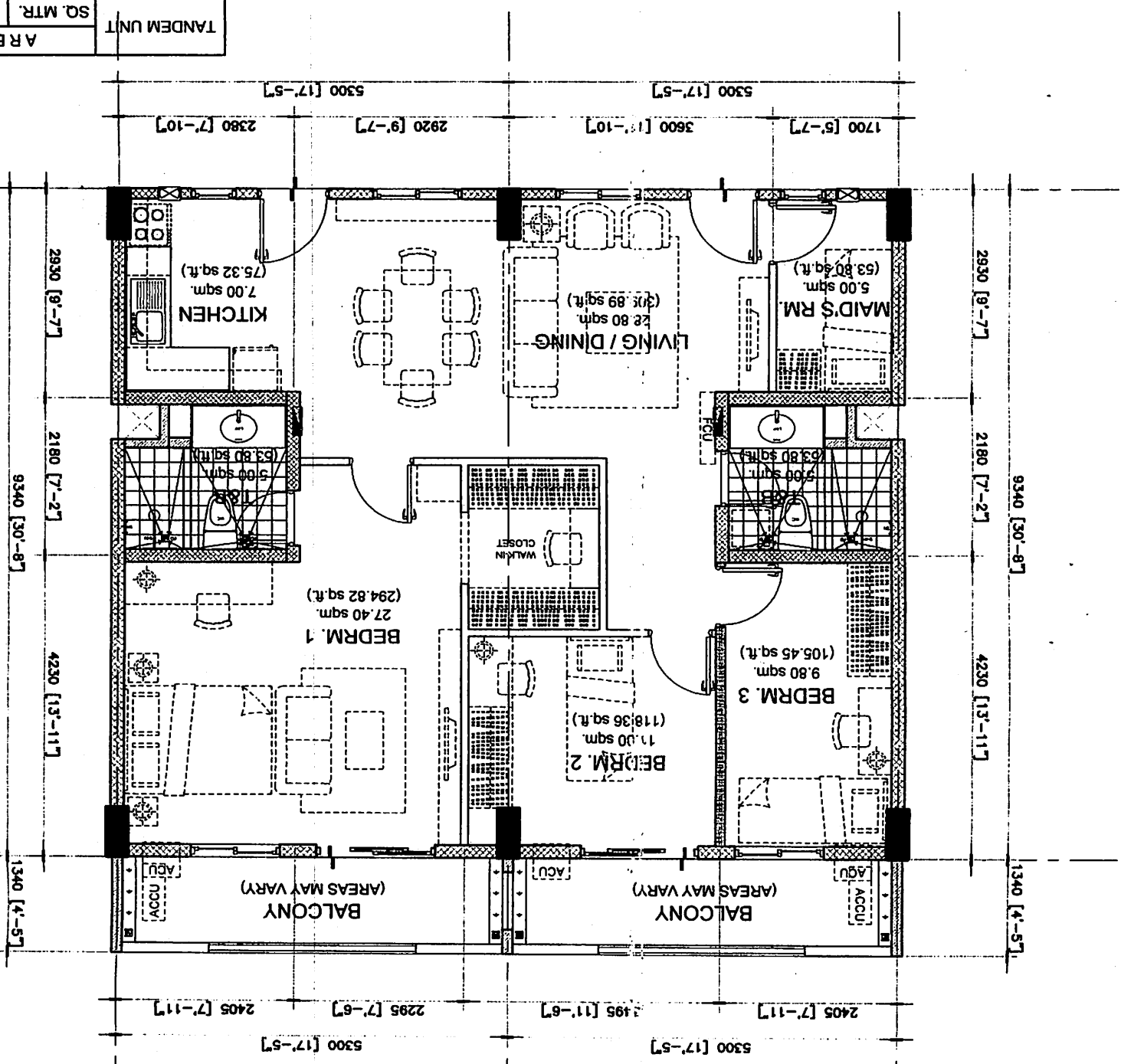
NOTED BY:	STEPH	23/11/12
	RMS	23/11/12
	GSA	23/11/12

99.00 sq.m. 3-BR (TANDEM UNIT)
(STANDARD LAYOUT UPON APPROVAL)
MID UNIT - (9.00 sq.m. / 1,065.24 sq.ft.
WITH BALCONY - (AREAS MAY VARY)

SCALE: 1 : 80 mtrs.

NOTE:
 - DIMENSIONS & AREAS MAY VARY BASED ON ACTUAL SITE CONDITION.
 - FURNITURES & APPLIANCES ARE NOT INCLUDED.

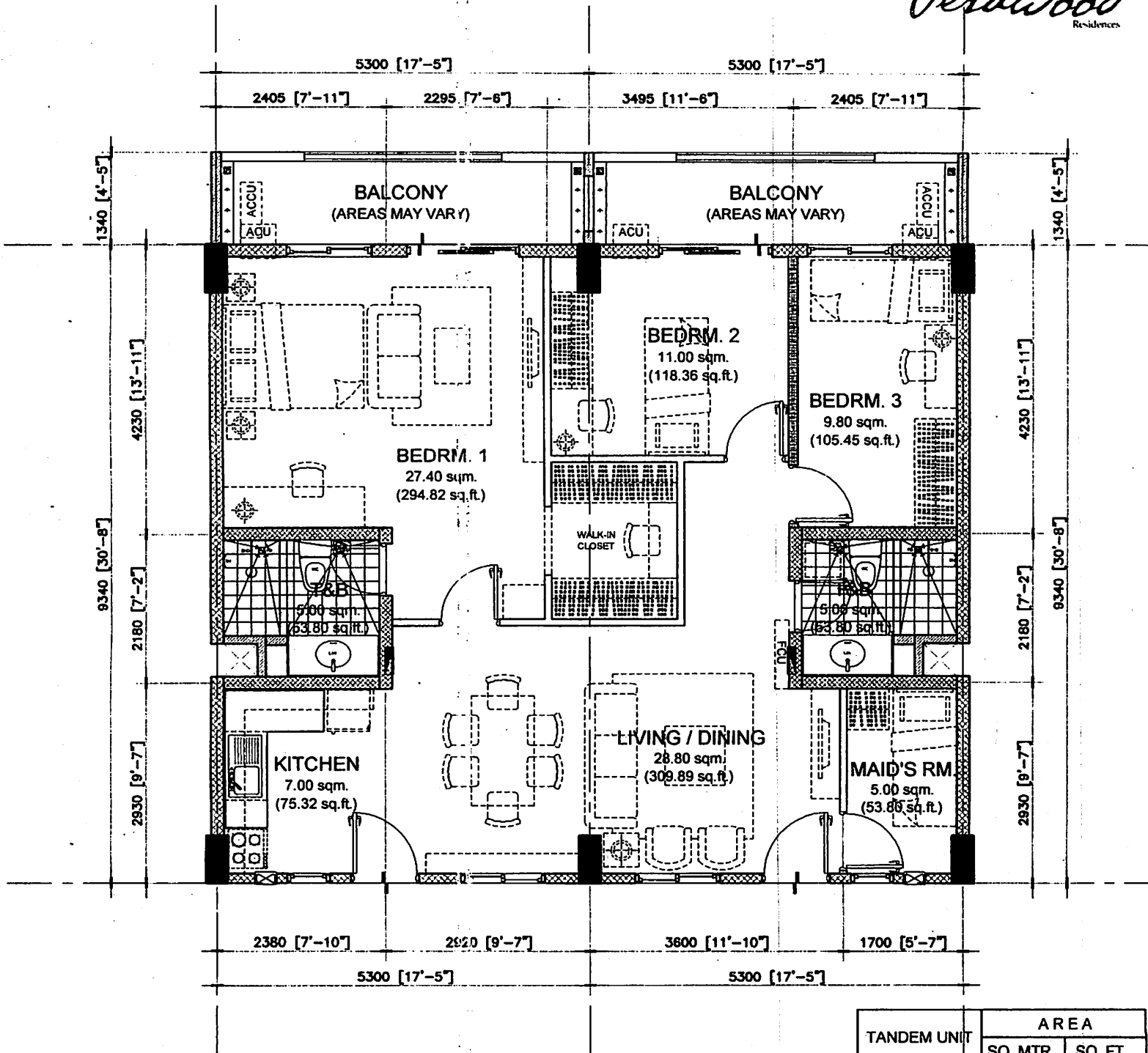
TANDEM UNIT		AREA
LIVING/DINING	28.80	309.89
KITCHEN	7.00	75.32
BEDROOM 1	27.40	294.82
BEDROOM 2	11.00	118.36
BEDROOM 3	9.80	105.45
MAID'S RM.	5.00	53.80
T&B 1	5.00	53.80
T&B 2	5.00	53.80
UNIT AREA	99.00	1,065.24
BALCONY 1 & 2	VARIES	VARIES



STANDARD UNIT LAYOUTS:
 FOR SALES & MARKETING REFERENCE

Newwood
 Residents

STANDARD UNIT LAYOUTS:
FOR SALES & MARKETING REFERENCE



NOTED BY:		
SCOPH	<i>[Signature]</i>	23 AUG 12
RMS	<i>[Signature]</i>	28 AUG
GSA	<i>[Signature]</i>	21 AUG

bevs.malong
2012.08.01

99.00 sq.m. 3-BR (TANDEM UNIT)
(STANDARD LAYOUT UPON APPROVAL)
MID UNIT - 99.00 sq.m. / 1,065.24 sq.ft.
- WITH BALCONY - (AREAS MAY VARY)

SCALE: 1 : 80 mtrs.

NOTE:
- DIMENSIONS & AREAS MAY VARY BASED ON ACTUAL SITE CONDITION.
- FURNITURES & APPLIANCES ARE NOT INCLUDED.

TANDEM UNIT	AREA	
	SQ. MTR.	SQ. FT.
LIVING/DINING	28.80	309.89
KITCHEN	7.00	75.32
BEDROOM 1	27.40	294.82
BEDROOM 2	11.00	118.36
BEDROOM 3	9.80	105.45
MAID'S RM.	5.00	53.80
T&B 1	5.00	53.80
T&B 2	5.00	53.80
UNIT AREA	99.00	1,065.24
BALCONY 1 & 2	VARIES	VARIES

