



INTEROFFICE MEMORANDUM

Ref #: PD-12-10-020

DATE : 22 October, 2012
 FOR : RBL / ARA
 FROM : Project Development
 CC : Sales Admin, Sales Mgt, Training, IT, DICA, Finance, Business Process, Marketing, Accounting
 RE : Verawood Residences (VWR)
 Pricelist for Peridot Building (3) - Cover Memo

We would like to seek your approval on the following for Verawood Residences (VWR) Peridot Building:

I. RESIDENTIAL UNITS AND PARKING SLOTS

A. Turnover specifications, Availability Plans and Unit Lay-outs

1. Turnover Specifications as per memo PD-12-10-018 dated October 15, 2012.
2. Availability Plans as per memo design-12-10-013 dated October 11, 2012.
3. Standard Building Unit Lay-outs as per memo PD-12-10-018 dated October 15, 2012.

B. Inventory / Summary of Unit Types and Price Ranges (as reflected in pricelist)

Bldg	Unit Type	# of Units / Slots	Unit Area (sqm, more or less)	Gross Area (sqm, w/ Service Area & Balc)	LIST Price (As in Pricelist)	
					Low	High
Peridot	2BR Inner	82	49.50	64.00 - 84.00	3.082 Mn	3.593 Mn
	3BR Corner	24	65.00	87.00 - 94.50	4.110 Mn	4.647 Mn
		106				
	Parking	116	12.50	12.50	500 k	

C. Tracking

	Inventory Count	
	Unit	Parking
Previous Launches	212	148
This Launch	106	116
Total Launched	318	264

II. SELLING PROGRAM, PAYMENT TERMS & IMPLEMENTING GUIDELINES

A. Selling Program

Item	Date
i. Effectivity of Pricelist	October 25, 2012 (Thursday)
ii. RFO Date (for pricelist)	Peridot - November 2015

B. Payment Terms and Discounts for MRB Projects



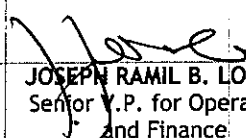

Minimum Downpayment of 20% of List Price. Discount & factor rates, other discounts and payment terms, spot cash discount rates stated in memo released by finance with reference #FIN-12-03-030 dated March 29, 2011.

C. Implementing Guidelines

- i. Acceptance of reservations by Documentation Group will commence on October 25, 2012.
- ii. Checks issued should be payable to "DMCI-PDI".
- iii. Unit Reservation Fee is PESOS: Twenty Thousand Only (Php 20,000.00). Parking Reservation Fee is PESOS: Ten Thousand Only (Php 10,000.00).
- iv. To manage the demand for Parking Slots, buyers may only purchase one (1) PS per residential unit. Formal announcement/s will be made should this guideline be revised.
- v. Regarding documentation, a buyer may request for a copy of the Master Deed and Unit Plan, subject to company policy and delivery timetable.
- vi. For closing fees, please refer to memo # PD-12-10-019 dated October 15, 2012

For your approval please.

Thank you.

Endorsed By:	Noted By:	Noted By:	Approved for Launch By:
 DENNIS O. YAP Project Dev't Manager	 ALMA A. FLORENDO V.P. for Project Development	 JOSEPH RAMIL B. LOMBOS Senior V.P. for Operations and Finance	 ALFREDO R. AUSTRIA President

PERIDOT

VERAWOOD RESIDENCES

Pricelist Effective October 25, 2012

RFO Date: November 2015

Based on Availability Plan dated October 11, 2012



UNIT NO.	DESCRIPTION	UNIT AREA (sqm)	BALCONY AREA (sqm)	SERVICE AREA (sqm)	TOTAL AREA (sqm)	LIST PRICE (Php)
Upper Ground Level						
101	3-Bedroom (End Unit)	65.00	22.00	7.50	94.50	4,647,000.00
102	2-Bedroom (Inner Unit)	49.50	15.00	7.50	72.00	3,953,100.00
103	2-Bedroom (Inner Unit)	49.50	15.00	7.50	72.00	3,922,800.00
106	2-Bedroom (Inner Unit)	49.50	15.00	7.50	72.00	3,953,100.00
107	2-Bedroom (Inner Unit)	49.50	15.00	7.50	72.00	3,922,800.00
108	2-Bedroom (Inner Unit)	49.50	15.00	7.50	72.00	3,953,100.00
109	3-Bedroom (End Unit)	65.00	22.00	7.50	94.50	4,647,000.00
110	3-Bedroom (End Unit)	65.00	18.50	7.50	91.00	4,317,200.00
111	2-Bedroom (Inner Unit)	49.50	11.50	7.50	68.50	3,316,700.00
112	2-Bedroom (Inner Unit)	49.50	11.50	7.50	68.50	3,289,300.00
114	2-Bedroom (Inner Unit)	49.50	11.50	7.50	68.50	3,316,700.00
115	2-Bedroom (Inner Unit)	49.50	11.50	7.50	68.50	3,316,700.00
116	2-Bedroom (Inner Unit)	49.50	11.50	7.50	68.50	3,289,300.00
117	2-Bedroom (Inner Unit)	49.50	11.50	7.50	68.50	3,316,700.00
118	3-Bedroom (End Unit)	65.00	18.50	7.50	91.00	4,317,200.00
Second Floor						
201	3-Bedroom (End Unit)	65.00	14.50	7.50	87.00	4,348,500.00
202	2-Bedroom (Inner Unit)	49.50	7.00	7.50	64.00	3,301,700.00
203	2-Bedroom (Inner Unit)	49.50	7.00	7.50	64.00	3,274,300.00
204	2-Bedroom (Inner Unit)	49.50	8.50	7.50	65.50	3,343,300.00
205	2-Bedroom (Inner Unit)	49.50	8.50	7.50	65.50	3,343,300.00
206	2-Bedroom (Inner Unit)	49.50	8.50	7.50	65.50	3,343,300.00
207	2-Bedroom (Inner Unit)	49.50	7.00	7.50	64.00	3,274,300.00
208	2-Bedroom (Inner Unit)	49.50	7.00	7.50	64.00	3,301,700.00
209	3-Bedroom (End Unit)	65.00	14.50	7.50	87.00	4,348,500.00
210	3-Bedroom (End Unit)	65.00	14.50	7.50	87.00	4,110,300.00
211	2-Bedroom (Inner Unit)	49.50	7.00	7.50	64.00	3,109,600.00
212	2-Bedroom (Inner Unit)	49.50	7.00	7.50	64.00	3,082,100.00
214	2-Bedroom (Inner Unit)	49.50	8.50	7.50	65.50	3,151,200.00
215	2-Bedroom (Inner Unit)	49.50	8.50	7.50	65.50	3,151,200.00
216	2-Bedroom (Inner Unit)	49.50	8.50	7.50	65.50	3,151,200.00
217	2-Bedroom (Inner Unit)	49.50	7.00	7.50	64.00	3,082,100.00
218	2-Bedroom (Inner Unit)	49.50	7.00	7.50	64.00	3,109,600.00
219	3-Bedroom (End Unit)	65.00	14.50	7.50	87.00	4,110,300.00
Third Floor						
301	3-Bedroom (End Unit)	65.00	14.50	7.50	87.00	4,365,600.00
302	2-Bedroom (Inner Unit)	49.50	7.00	7.50	64.00	3,315,500.00
303	2-Bedroom (Inner Unit)	49.50	7.00	7.50	64.00	3,288,000.00
304	2-Bedroom (Inner Unit)	49.50	8.50	7.50	65.50	3,357,100.00
305	2-Bedroom (Inner Unit)	49.50	8.50	7.50	65.50	3,357,100.00
306	2-Bedroom (Inner Unit)	49.50	8.50	7.50	65.50	3,357,100.00
307	2-Bedroom (Inner Unit)	49.50	7.00	7.50	64.00	3,288,000.00
308	2-Bedroom (Inner Unit)	49.50	7.00	7.50	64.00	3,315,500.00
309	3-Bedroom (End Unit)	65.00	14.50	7.50	87.00	4,365,600.00
310	3-Bedroom (End Unit)	65.00	14.50	7.50	87.00	4,127,300.00
311	2-Bedroom (Inner Unit)	49.50	7.00	7.50	64.00	3,123,300.00
312	2-Bedroom (Inner Unit)	49.50	7.00	7.50	64.00	3,095,800.00
314	2-Bedroom (Inner Unit)	49.50	8.50	7.50	65.50	3,164,900.00
315	2-Bedroom (Inner Unit)	49.50	8.50	7.50	65.50	3,164,900.00
316	2-Bedroom (Inner Unit)	49.50	8.50	7.50	65.50	3,164,900.00
317	2-Bedroom (Inner Unit)	49.50	7.00	7.50	64.00	3,095,800.00
318	2-Bedroom (Inner Unit)	49.50	7.00	7.50	64.00	3,123,300.00
319	3-Bedroom (End Unit)	65.00	14.50	7.50	87.00	4,127,300.00
Fourth Floor:						
401	3-Bedroom (End Unit)	65.00	14.50	7.50	87.00	4,382,600.00
402	2-Bedroom (Inner Unit)	49.50	7.00	7.50	64.00	3,329,200.00
403	2-Bedroom (Inner Unit)	49.50	7.00	7.50	64.00	3,301,700.00
404	2-Bedroom (Inner Unit)	49.50	8.50	7.50	65.50	3,370,800.00
405	2-Bedroom (Inner Unit)	49.50	8.50	7.50	65.50	3,370,800.00
406	2-Bedroom (Inner Unit)	49.50	8.50	7.50	65.50	3,370,800.00
407	2-Bedroom (Inner Unit)	49.50	7.00	7.50	64.00	3,301,700.00
408	2-Bedroom (Inner Unit)	49.50	7.00	7.50	64.00	3,329,200.00
409	3-Bedroom (End Unit)	65.00	14.50	7.50	87.00	4,382,600.00
410	3-Bedroom (End Unit)	65.00	14.50	7.50	87.00	4,144,300.00
411	2-Bedroom (Inner Unit)	49.50	7.00	7.50	64.00	3,137,000.00
412	2-Bedroom (Inner Unit)	49.50	7.00	7.50	64.00	3,109,600.00
414	2-Bedroom (Inner Unit)	49.50	8.50	7.50	65.50	3,178,600.00
415	2-Bedroom (Inner Unit)	49.50	8.50	7.50	65.50	3,178,600.00
416	2-Bedroom (Inner Unit)	49.50	8.50	7.50	65.50	3,178,600.00
417	2-Bedroom (Inner Unit)	49.50	7.00	7.50	64.00	3,109,600.00
418	2-Bedroom (Inner Unit)	49.50	7.00	7.50	64.00	3,137,000.00
419	3-Bedroom (End Unit)	65.00	14.50	7.50	87.00	4,144,300.00

[Handwritten signatures and initials]
 ARA
 RBA
 AAF
 DOY

PERIDOT

VERAWOOD RESIDENCES

Pricelist Effective October 25, 2012

RFO Date: November 2015

Based on Availability Plan dated October 11, 2012



UNIT NO.	DESCRIPTION	UNIT AREA (sqm)	BALCONY AREA (sqm)	SERVICE AREA (sqm)	TOTAL AREA (sqm)	LIST PRICE (PhP)
Fifth Floor						
501	3-Bedroom (End Unit)	65.00	14.50	7.50	87.00	4,399,600.00
502	2-Bedroom (Inner Unit)	49.50	7.00	7.50	64.00	3,342,900.00
503	2-Bedroom (Inner Unit)	49.50	7.00	7.50	64.00	3,315,500.00
504	2-Bedroom (Inner Unit)	49.50	8.50	7.50	65.50	3,384,500.00
505	2-Bedroom (Inner Unit)	49.50	8.50	7.50	65.50	3,384,500.00
506	2-Bedroom (Inner Unit)	49.50	8.50	7.50	65.50	3,384,500.00
507	2-Bedroom (Inner Unit)	49.50	7.00	7.50	64.00	3,315,500.00
508	2-Bedroom (Inner Unit)	49.50	7.00	7.50	64.00	3,342,900.00
509	3-Bedroom (End Unit)	65.00	14.50	7.50	87.00	4,399,600.00
510	3-Bedroom (End Unit)	65.00	14.50	7.50	87.00	4,161,400.00
511	2-Bedroom (Inner Unit)	49.50	7.00	7.50	64.00	3,150,700.00
512	2-Bedroom (Inner Unit)	49.50	7.00	7.50	64.00	3,123,300.00
514	2-Bedroom (Inner Unit)	49.50	8.50	7.50	65.50	3,192,300.00
515	2-Bedroom (Inner Unit)	49.50	8.50	7.50	65.50	3,192,300.00
516	2-Bedroom (Inner Unit)	49.50	8.50	7.50	65.50	3,192,300.00
517	2-Bedroom (Inner Unit)	49.50	7.00	7.50	64.00	3,123,300.00
518	2-Bedroom (Inner Unit)	49.50	7.00	7.50	64.00	3,150,700.00
519	3-Bedroom (End Unit)	65.00	14.50	7.50	87.00	4,161,400.00
Sixth Floor						
601	3-Bedroom (End Unit)	65.00	14.50	7.50	87.00	4,416,600.00
602	2-Bedroom (Inner Unit)	49.50	7.00	7.50	64.00	3,356,600.00
603	2-Bedroom (Inner Unit)	49.50	7.00	7.50	64.00	3,329,200.00
604	2-Bedroom (Inner Unit)	49.50	8.50	7.50	65.50	3,398,200.00
605	2-Bedroom (Inner Unit)	49.50	8.50	7.50	65.50	3,398,200.00
606	2-Bedroom (Inner Unit)	49.50	8.50	7.50	65.50	3,398,200.00
607	2-Bedroom (Inner Unit)	49.50	7.00	7.50	64.00	3,329,200.00
608	2-Bedroom (Inner Unit)	49.50	7.00	7.50	64.00	3,356,600.00
609	3-Bedroom (End Unit)	65.00	14.50	7.50	87.00	4,416,600.00
610	3-Bedroom (End Unit)	65.00	14.50	7.50	87.00	4,178,400.00
611	2-Bedroom (Inner Unit)	49.50	7.00	7.50	64.00	3,164,500.00
612	2-Bedroom (Inner Unit)	49.50	7.00	7.50	64.00	3,137,000.00
614	2-Bedroom (Inner Unit)	49.50	8.50	7.50	65.50	3,206,100.00
615	2-Bedroom (Inner Unit)	49.50	8.50	7.50	65.50	3,206,100.00
616	2-Bedroom (Inner Unit)	49.50	8.50	7.50	65.50	3,206,100.00
617	2-Bedroom (Inner Unit)	49.50	7.00	7.50	64.00	3,137,000.00
618	2-Bedroom (Inner Unit)	49.50	7.00	7.50	64.00	3,164,500.00
619	3-Bedroom (End Unit)	65.00	14.50	7.50	87.00	4,178,400.00

me
ARA
RBL
AAF
DOY

Notes :

1. CASH PRICE is LIST PRICE less 10%.
2. Price of parking slot is not included in the list price. Parking slots are sold separately.
3. Above prices are subject to change without prior notice
4. The unit areas may change based on the final construction drawings.
5. Prices indicated are exclusive of closing fees.
6. The unit number is also the number of the service area located at the rooftop. Allocation is 1:1.
7. Prices may include VAT, if and where applicable.
8. The attached availability plans are intended to give a general idea of the project and as such are not to be relied upon as statements of fact. These drawings are based on current plans. Buyers can verify their factual correctness and subsequent changes, if any. The contents herein are subject to change without prior notice and do not constitute an offer or contract. All floor plans contained herein are not to scale.

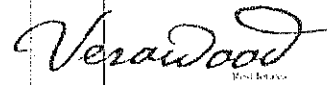
PERIDOT

VERAWOOD RESIDENCES

Pricelist Effective October 25, 2012

RFO Date: November 2015

Based on Availability Plan dated October 11, 2012



UNIT NO.	DESCRIPTION	PARKING AREA (sqm, more or less)	LIST PRICE (PhP)
Basement Level 1			
C-01	Covered Parking	12.50	500,000.00
C-02	Covered Parking	12.50	500,000.00
C-03	Covered Parking	12.50	500,000.00
C-04	Covered Parking	12.50	500,000.00
C-05	Covered Parking	12.50	500,000.00
C-06	Covered Parking	12.50	500,000.00
C-07	Covered Parking	12.50	500,000.00
C-08	Covered Parking	12.50	500,000.00
C-09	Covered Parking	12.50	500,000.00
C-10	Covered Parking	12.50	500,000.00
C-11	Covered Parking	12.50	500,000.00
C-12	Covered Parking	12.50	500,000.00
C-14	Covered Parking	12.50	500,000.00
C-15	Covered Parking	12.50	500,000.00
C-16	Covered Parking	12.50	500,000.00
C-17	Covered Parking	12.50	500,000.00
C-18	Covered Parking	12.50	500,000.00
C-19	Covered Parking	12.50	500,000.00
C-20	Covered Parking	12.50	500,000.00
C-21	Covered Parking	12.50	500,000.00
C-22	Covered Parking	12.50	500,000.00
C-23	Covered Parking	12.50	500,000.00
C-24	Covered Parking	12.50	500,000.00
C-25	Covered Parking	12.50	500,000.00
C-26	Covered Parking	12.50	500,000.00
C-27	Covered Parking	12.50	500,000.00
C-28	Covered Parking	12.50	500,000.00
C-29	Covered Parking	12.50	500,000.00
C-30	Covered Parking	12.50	500,000.00
C-31	Covered Parking	12.50	500,000.00
C-32	Covered Parking	12.50	500,000.00
C-33	Covered Parking	12.50	500,000.00
C-34	Covered Parking	12.50	500,000.00
C-35	Covered Parking	12.50	500,000.00
C-36	Covered Parking	12.50	500,000.00
C-37	Covered Parking	12.50	500,000.00
C-38	Covered Parking	12.50	500,000.00
C-39	Covered Parking	12.50	500,000.00
C-40	Covered Parking	12.50	500,000.00
C-41	Covered Parking	12.50	500,000.00
C-42	Covered Parking	12.50	500,000.00
C-43	Covered Parking	12.50	500,000.00
C-44	Covered Parking	12.50	500,000.00
C-45	Covered Parking	12.50	500,000.00
C-46	Covered Parking	12.50	500,000.00
C-47	Covered Parking	12.50	500,000.00
C-48	Covered Parking	12.50	500,000.00
C-49	Covered Parking	12.50	500,000.00
C-50	Covered Parking	12.50	500,000.00
C-51	Covered Parking	12.50	500,000.00
C-52	Covered Parking	12.50	500,000.00
C-53	Covered Parking	12.50	500,000.00
C-54	Covered Parking	12.50	500,000.00
C-55	Covered Parking	12.50	500,000.00
C-56	Covered Parking	12.50	500,000.00
C-57	Covered Parking	12.50	500,000.00
C-58	Covered Parking	12.50	500,000.00
C-59	Covered Parking	12.50	500,000.00
Basement Level 2			
C-60	Covered Parking	12.50	500,000.00
C-61	Covered Parking	12.50	500,000.00
C-62	Covered Parking	12.50	500,000.00
C-63	Covered Parking	12.50	500,000.00
C-64	Covered Parking	12.50	500,000.00
C-65	Covered Parking	12.50	500,000.00
C-66	Covered Parking	12.50	500,000.00
C-67	Covered Parking	12.50	500,000.00
C-68	Covered Parking	12.50	500,000.00
C-69	Covered Parking	12.50	500,000.00
C-70	Covered Parking	12.50	500,000.00
C-71	Covered Parking	12.50	500,000.00
C-72	Covered Parking	12.50	500,000.00
C-73	Covered Parking	12.50	500,000.00
C-74	Covered Parking	12.50	500,000.00
C-75	Covered Parking	12.50	500,000.00
C-76	Covered Parking	12.50	500,000.00
C-77	Covered Parking	12.50	500,000.00
C-78	Covered Parking	12.50	500,000.00
C-79	Covered Parking	12.50	500,000.00
C-80	Covered Parking	12.50	500,000.00
C-81	Covered Parking	12.50	500,000.00
C-82	Covered Parking	12.50	500,000.00

ARA
RBL
AAF
DOY

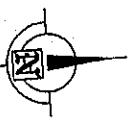
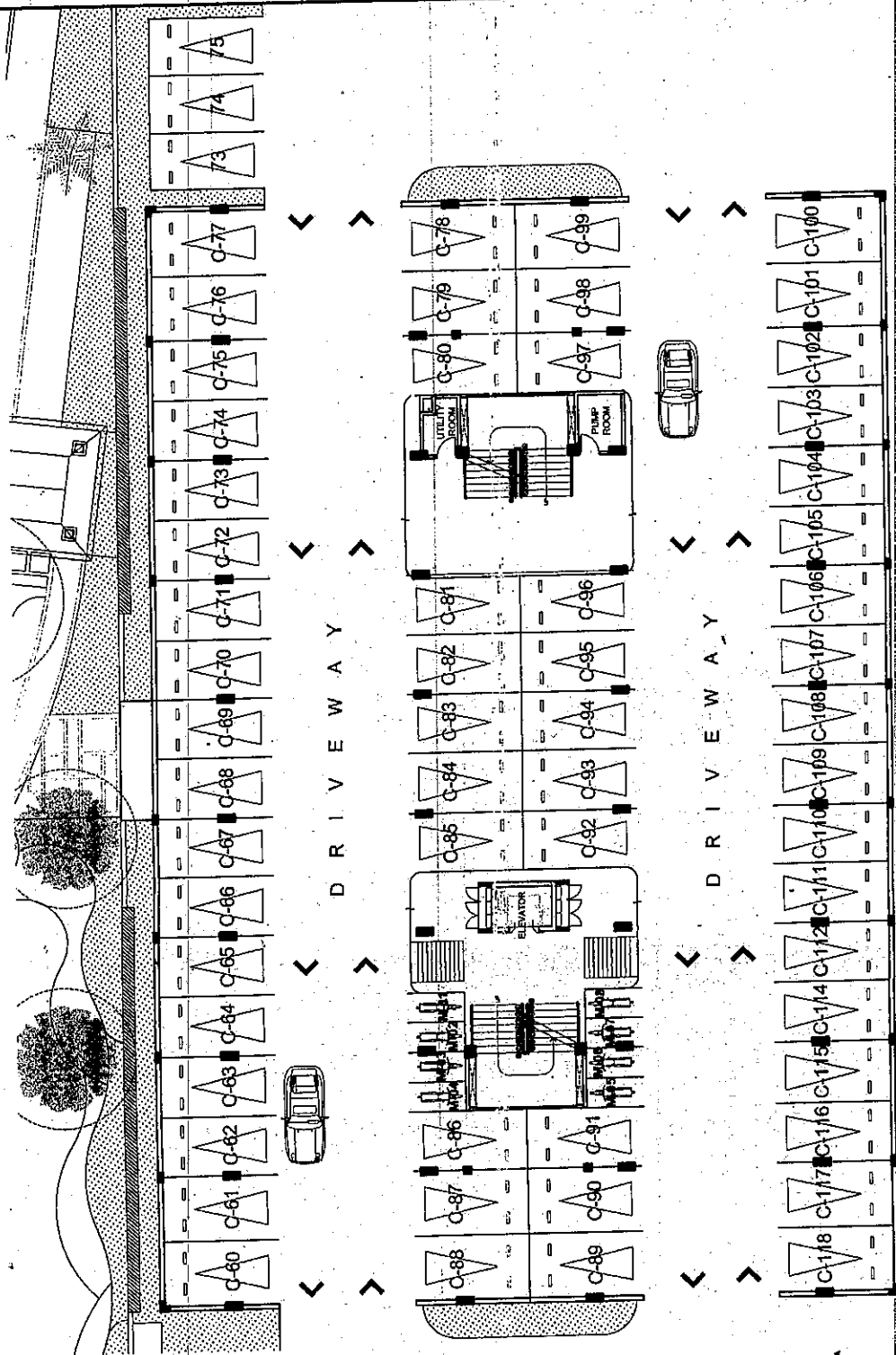


UNIT NO.	DESCRIPTION	PARKING AREA (sqm, more or less)	LIST PRICE (Php)
C-83	Covered Parking	12.50	500,000.00
C-84	Covered Parking	12.50	500,000.00
C-85	Covered Parking	12.50	500,000.00
C-86	Covered Parking	12.50	500,000.00
C-87	Covered Parking	12.50	500,000.00
C-88	Covered Parking	12.50	500,000.00
C-89	Covered Parking	12.50	500,000.00
C-90	Covered Parking	12.50	500,000.00
C-91	Covered Parking	12.50	500,000.00
C-92	Covered Parking	12.50	500,000.00
C-93	Covered Parking	12.50	500,000.00
C-94	Covered Parking	12.50	500,000.00
C-95	Covered Parking	12.50	500,000.00
C-96	Covered Parking	12.50	500,000.00
C-97	Covered Parking	12.50	500,000.00
C-98	Covered Parking	12.50	500,000.00
C-99	Covered Parking	12.50	500,000.00
C-100	Covered Parking	12.50	500,000.00
C-101	Covered Parking	12.50	500,000.00
C-102	Covered Parking	12.50	500,000.00
C-103	Covered Parking	12.50	500,000.00
C-104	Covered Parking	12.50	500,000.00
C-105	Covered Parking	12.50	500,000.00
C-106	Covered Parking	12.50	500,000.00
C-107	Covered Parking	12.50	500,000.00
C-108	Covered Parking	12.50	500,000.00
C-109	Covered Parking	12.50	500,000.00
C-110	Covered Parking	12.50	500,000.00
C-111	Covered Parking	12.50	500,000.00
C-112	Covered Parking	12.50	500,000.00
C-114	Covered Parking	12.50	500,000.00
C-115	Covered Parking	12.50	500,000.00
C-116	Covered Parking	12.50	500,000.00
C-117	Covered Parking	12.50	500,000.00
C-118	Covered Parking	12.50	500,000.00

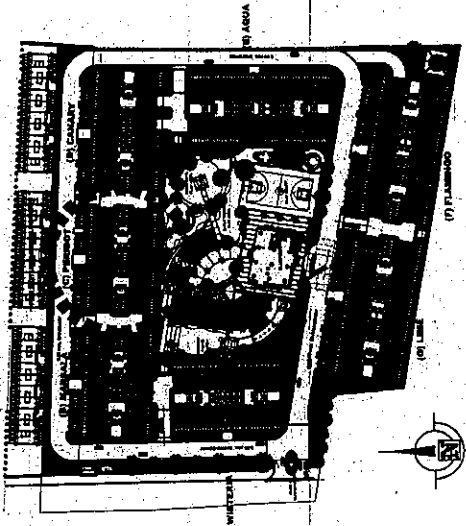
ARA
 RBL
 AAF
 DOT

- Notes :
- CASH PRICE is LIST PRICE less 10%.
 - Parking slots are sold separately.
 - Above prices are subject to change without prior notice
 - The parking areas may change based on the final construction drawings.
 - Prices indicated are exclusive of closing fees.
 - The unit number is also the number of the service area located at the rooftop. Allocation is 1:1.
 - Prices may include VAT, if and where applicable.
 - The attached availability plans are intended to give a general idea of the project and as such are not to be relied upon as statements of fact. These drawings are based on current plans. Buyers can verify their factual correctness and subsequent changes, if any. The contents herein are subject to change without prior notice and do not constitute an offer or contract. All floor plans contained herein are not to scale.

FACING AMENITIES



FACING ROAD



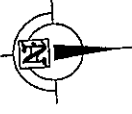
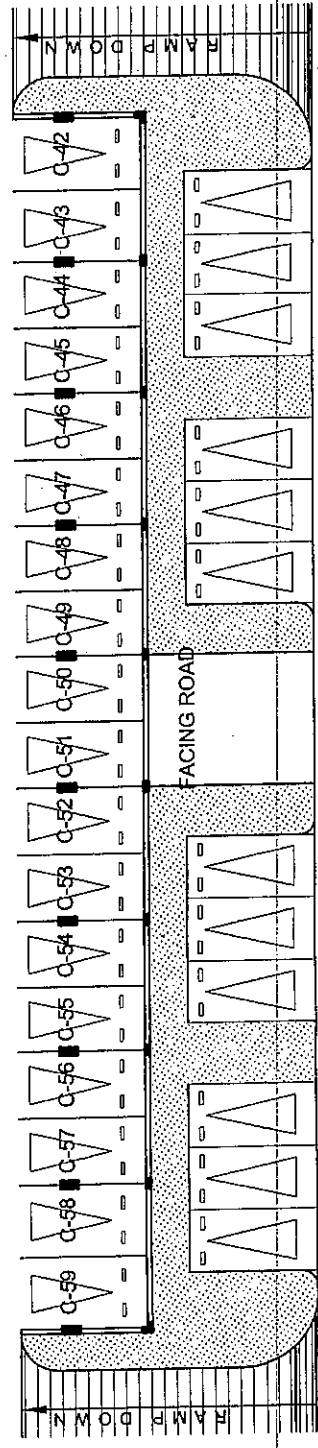
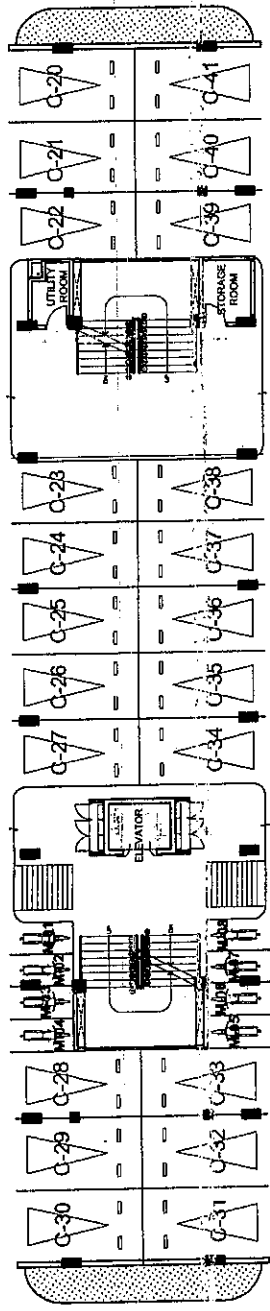
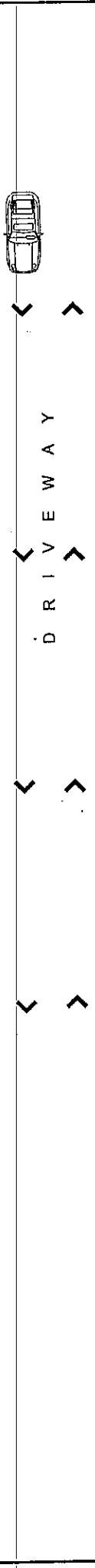
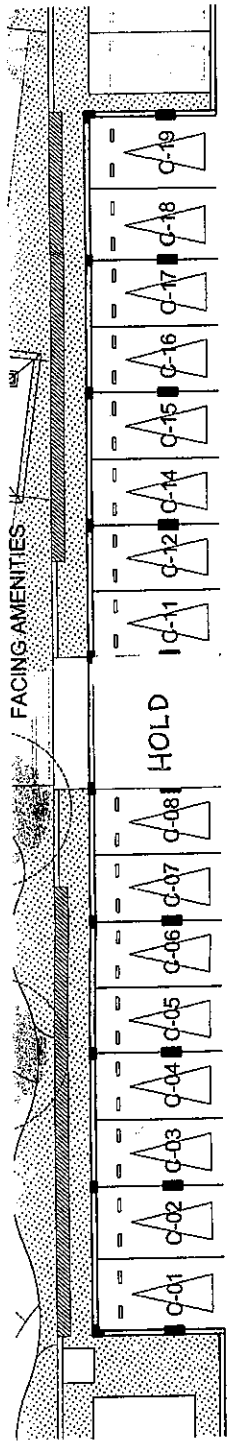
KEY PLAN

BLDG. C - PERIDOT
PARKING LEVEL 2 FLOOR PLAN
 11 OCTOBER 2012

VeraWood
 Residences

AVAILABILITY PLAN

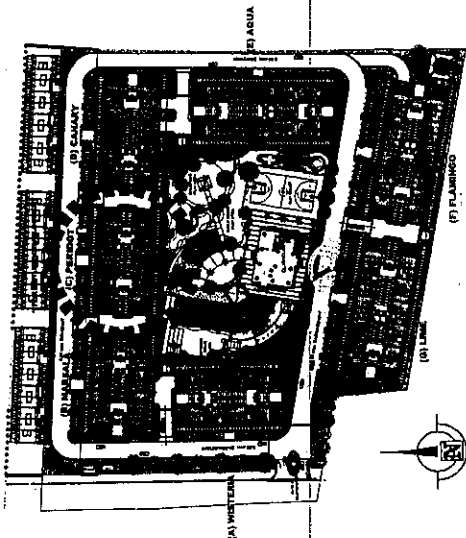
<p>DMCI HOMES <i>Feels real good to be home.</i></p>	NOTED BY:	
	RMS	GSA
NO.	DATE	REVISIONS
01	20112	Issued for reference



BLDG. C - PERIDOT
PARKING LEVEL 1 FLOOR PLAN
 11 OCTOBER 2012

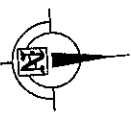
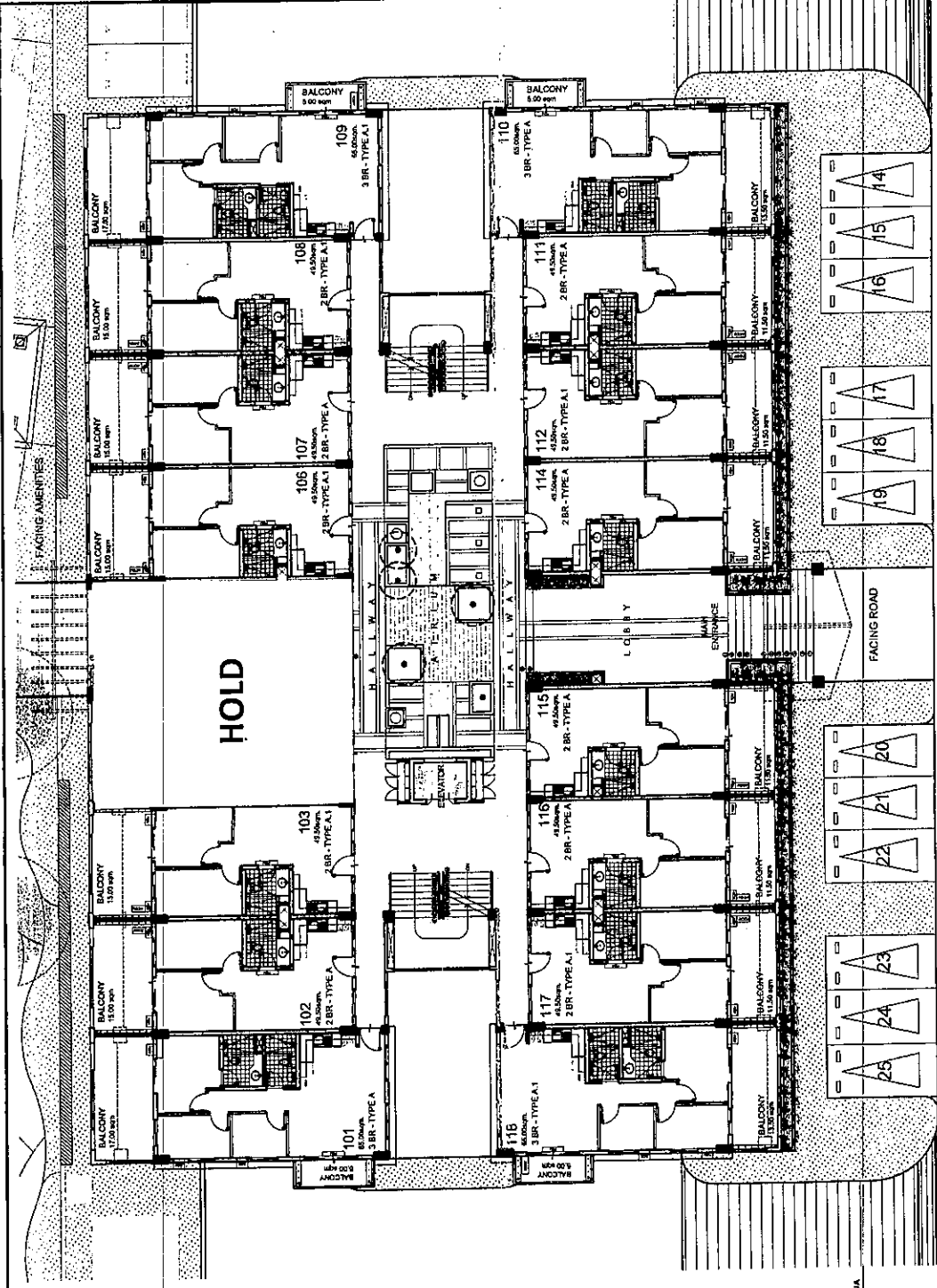
Verado
 Residential

AVAILABILITY PLAN



KEY PLAN

 <i>Feels real, good to be home</i>	NO.	DATE	REVISIONS	NOTED BY:
	00	10/11/12	Issued for reference	RMS (Signature) (Date)
				GSA
				g
				130 ft



VeraWood
Resolutions

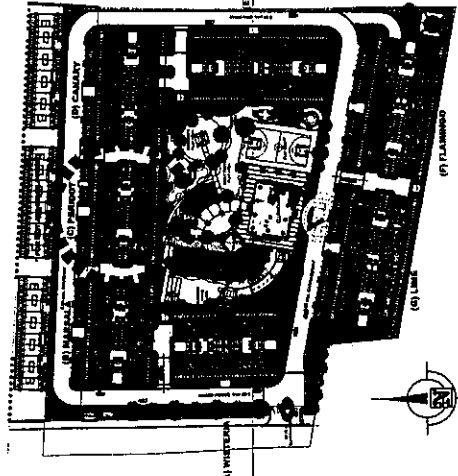
BLDG. C - PERIDOT
UPPER GROUND FLOOR PLAN
11 OCTOBER 2012

AVAILABILITY PLAN

UNIT LIST FOR POSSIBLE TANDEM:

- 106 & 107
- 112 & 114

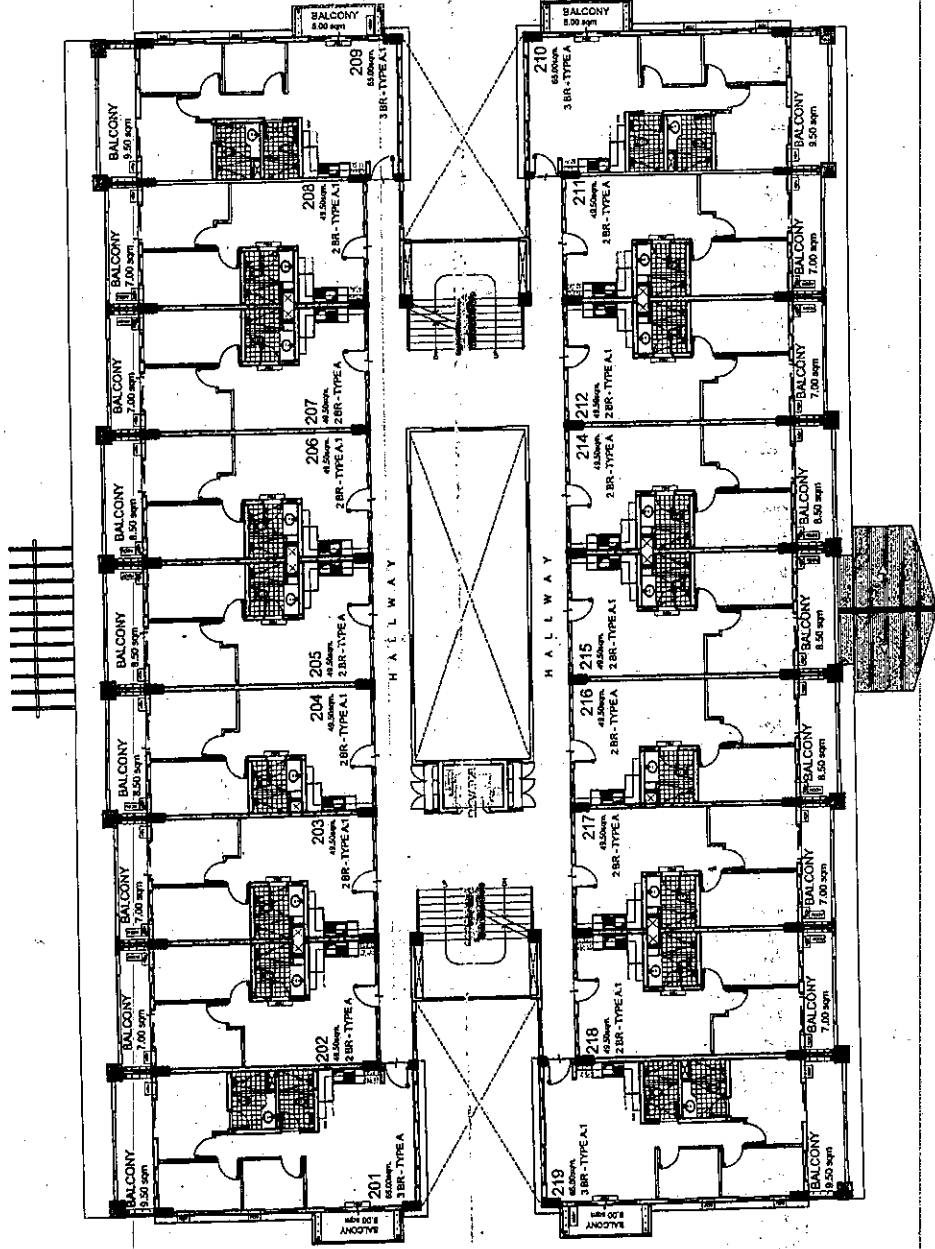
NOTE: Subject to change upon availability of units and standard company policy regarding request for tandem.



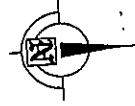
KEY PLAN

<p>DMCI HOMES <i>Feels real, good to be home.</i></p>	NO. DATE	REVISIONS	NOTED BY:
	00	10/11/12	Issued for reference
			RMS <i>[Signature]</i> /SDP
			GSA <i>[Signature]</i> /SDA

Facing Amenities



Facing Road



BLDG. C - PERIDOT
SECOND FLOOR PLAN
 11 OCTOBER 2012

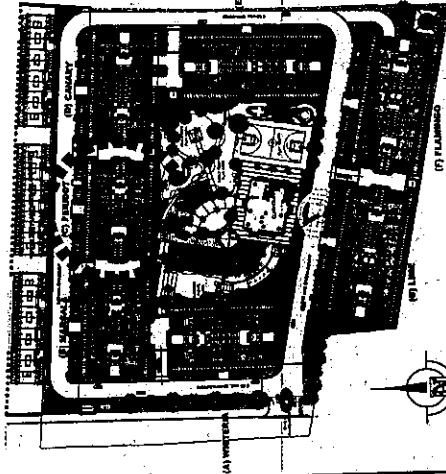
Veradood
 Residential

AVAILABILITY PLAN

UNIT LIST FOR POSSIBLE TANDEM:

- 204 & 205 212 & 214
- 206 & 207 215 & 216

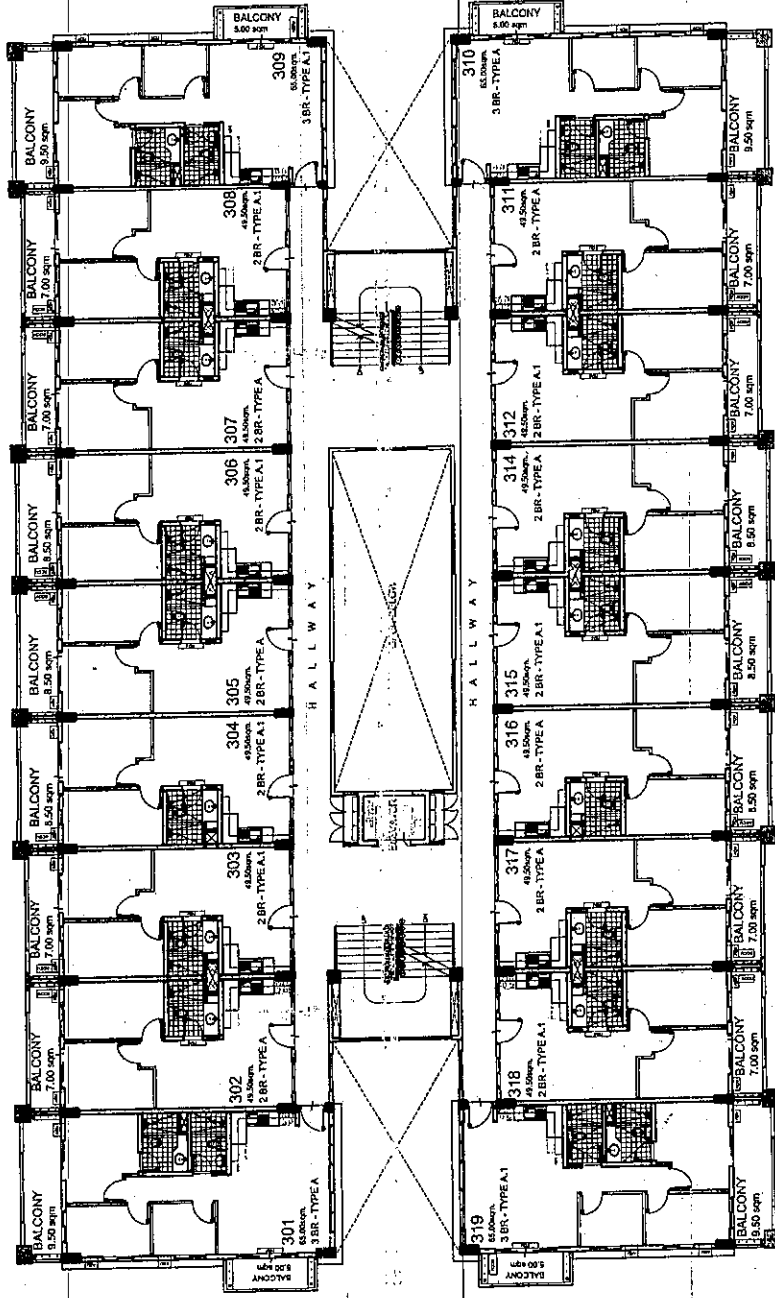
NOTE: Subject to change upon availability of units and standard company policy regarding request for tandem.



KEY PLAN

NO.	DATE	REV./ISSONS	NOTED BY:
	10/11/12	Issued for reference	
GSA			<i>504</i>

Facing Amenities

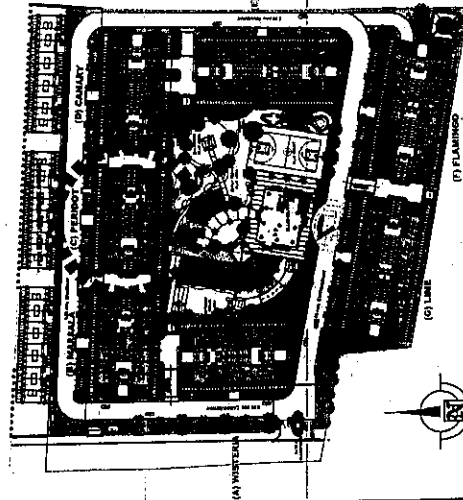


Facing Road

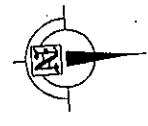
UNIT LIST FOR POSSIBLE TANDEM:

- 304 & 305 312 & 314
- 306 & 307 315 & 316

NOTE: Subject to change upon availability of units and standard company policy regarding request for tandem.



KEY PLAN



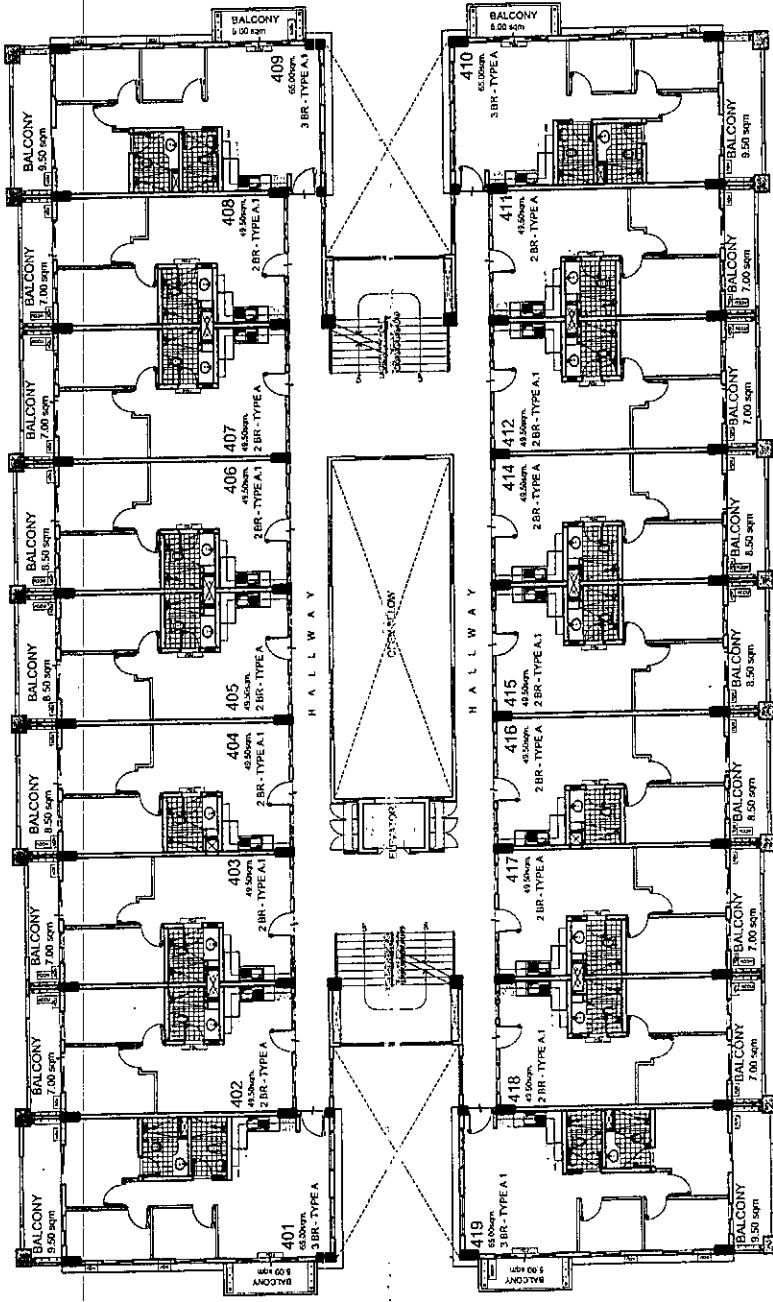
BLDG. C - PERIDOT
THIRD FLOOR PLAN
 11 OCTOBER 2012

Verano
 Real Estate

<p>DMCI HOMES <i>Feels real, good to be home</i></p>	NO. DATE REVISIONS 06 10/11/12 Issued for reference	NOTED BY: RMS <i>[Signature]</i> 12/07/12 GSA <i>[Signature]</i> 10/11/12
	(A) WESTERN (B) EASTERN (C) NORTH (D) SOUTH	

AVAILABILITY PLAN

Facing Amenities

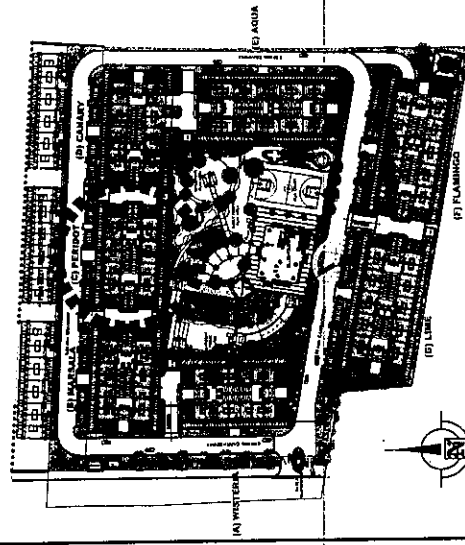


Facing Road

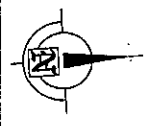
UNIT LIST FOR POSSIBLE TANDEM:

- 404 & 405 412 & 414
- 406 & 407 415 & 416

NOTE: Subject to change upon availability of units and standard company policy regarding request for tandem.



KEY PLAN



BLDG. C - PERIDOT
FOURTH FLOOR PLAN
 11 OCTOBER 2012

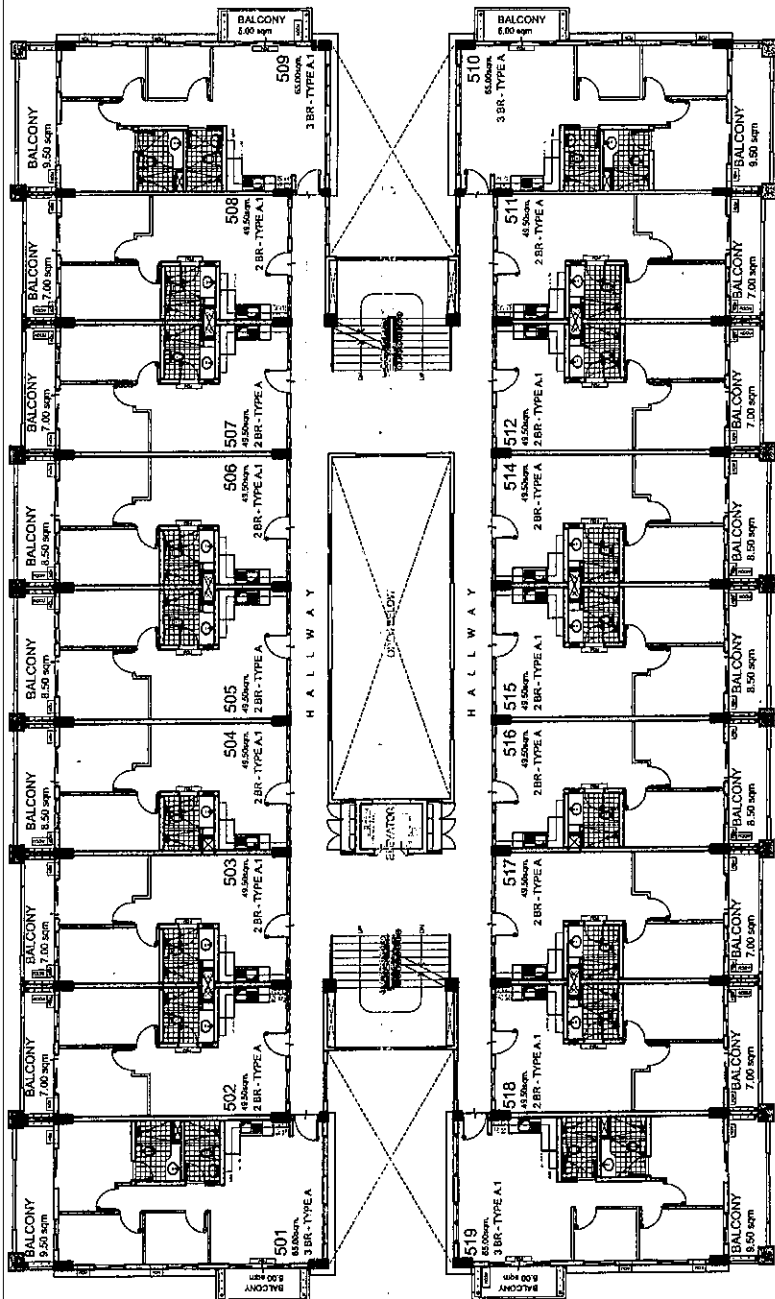
Verano
 Residences

AVAILABILITY PLAN

NOTED BY:		RMS	12/07
GSA		9	15 Oct
NO.	DATE	REVISIONS	
01	10/11/12	Issued for reference	



Facing Amenities

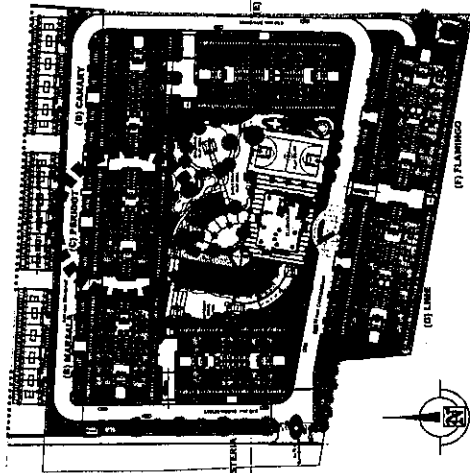


Facing Road

UNIT LIST FOR POSSIBLE TANDEM:

- 504 & 505 512 & 514
- 506 & 507 515 & 516

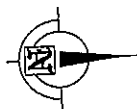
NOTE: Subject to change upon availability of units and standard company policy regarding request for tandem.



KEY PLAN

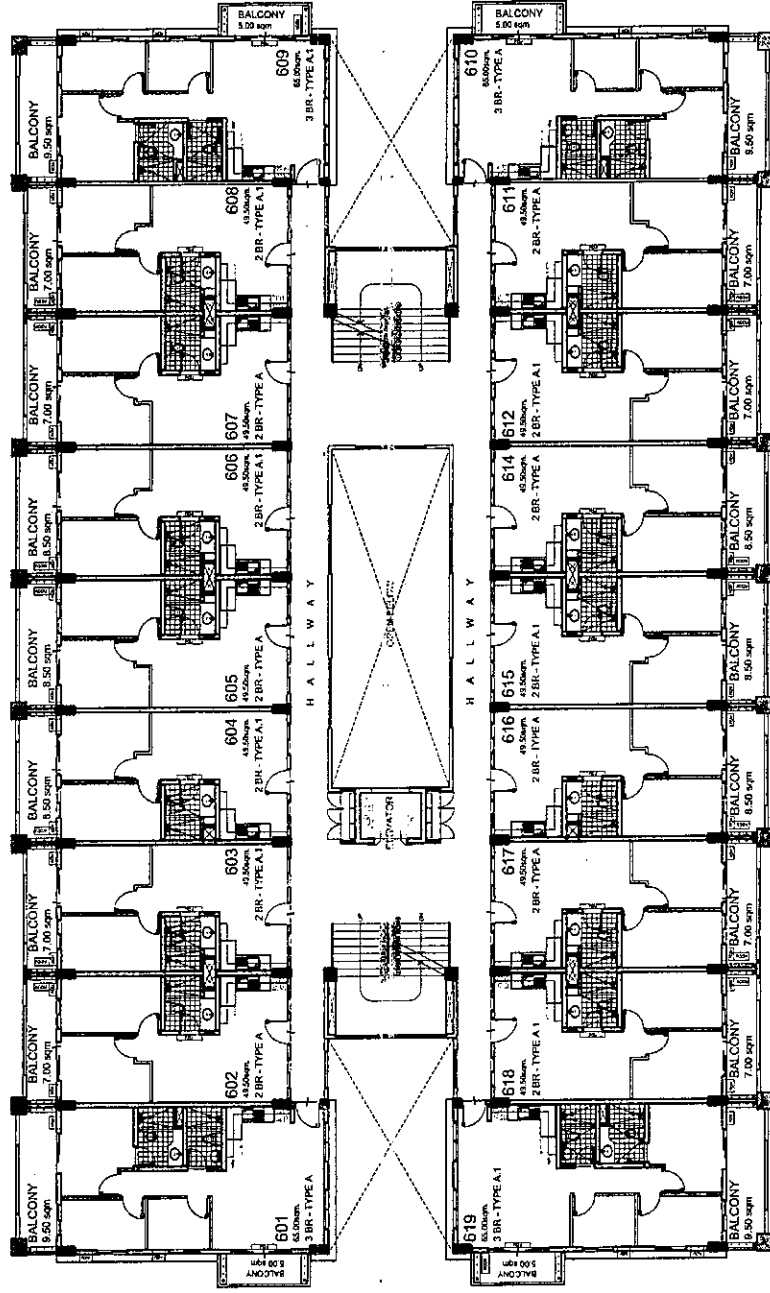
BLDG. C - PERIDOT
FIFTH FLOOR PLAN
 11 OCTOBER 2012

<p>DMCI HOMES Feels real good to be home</p>	NO. 33	DATE 10/11/12	REVISIONS Issued for reference	NOTED BY: RMS [Signature]	DATE 12/01
				GSA	ITDd



Verano
Residences

Facing Amenities

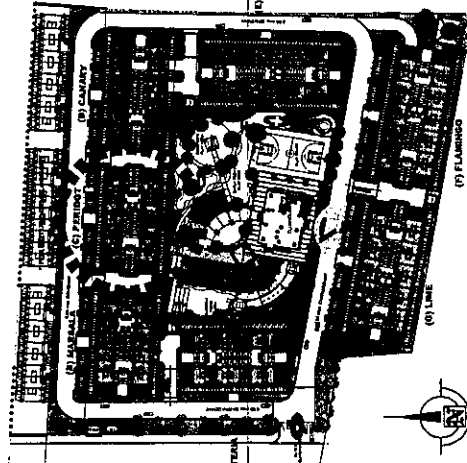


Facing Road

UNIT LIST FOR POSSIBLE TANDEM:

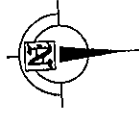
- 604 & 605 612 & 614
- 606 & 607 615 & 616

NOTE: Subject to change upon availability of units and standard company policy regarding request for tandem.



KEY PLAN

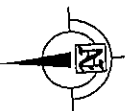
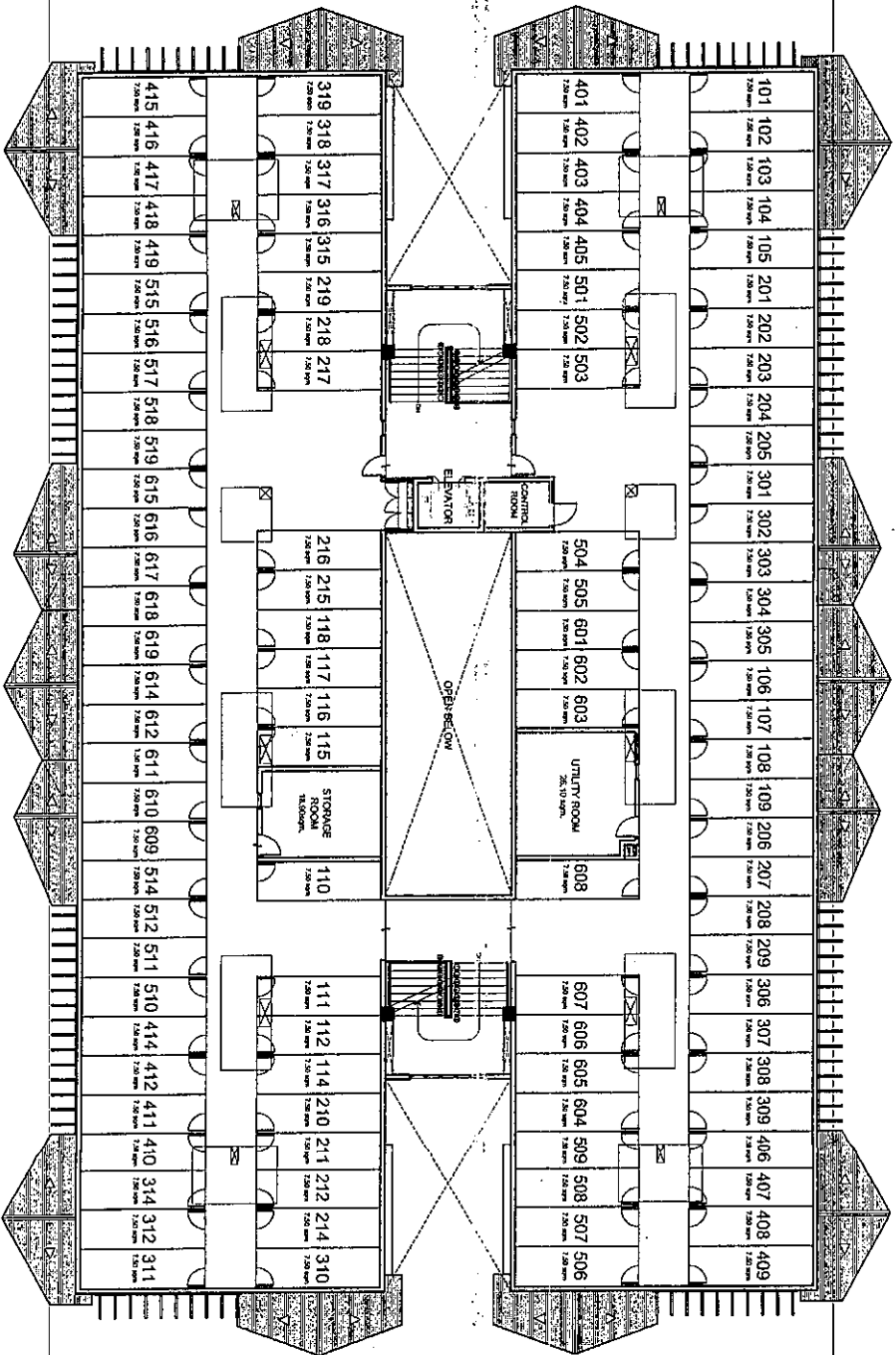
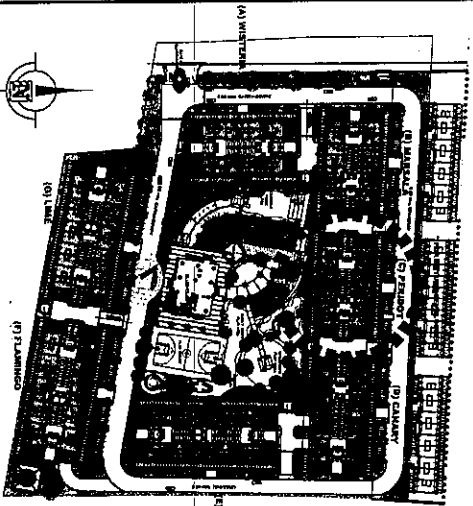
BLDG. C - PERIDOT
SIXTH FLOOR PLAN
 11 OCTOBER 2012



VeraWood
 Real Estate

AVAILABILITY PLAN

<p>DMCI HOMES <i>Feels real good to be home</i></p>	NO DATE	REVISIONS	NOTED BY:	
	01	10/11/12	Revised for reference	RMS
				GSA
				15 Oct



NO.	DATE	REVISIONS
00	10/11/12	Issued for reference

NOTED BY:	
RMS	<i>RMS</i>
GSA	<i>GSA</i>
KDD	<i>KDD</i>

BLDG. C - PERIDOT

ROOF DECK PLAN

11 OCTOBER 2012

Verandoo
Residences